



EasyAVR PRO v8

DEVELOPMENT BOARD for 8/16 bit AVR® microcontrollers

It's time to rethink the way you approach rapid prototyping

Let us introduce you to the latest generation of MIKROE development boards – E a s y A V R P R O v 8

MIKROE

Time-saving embedded tools

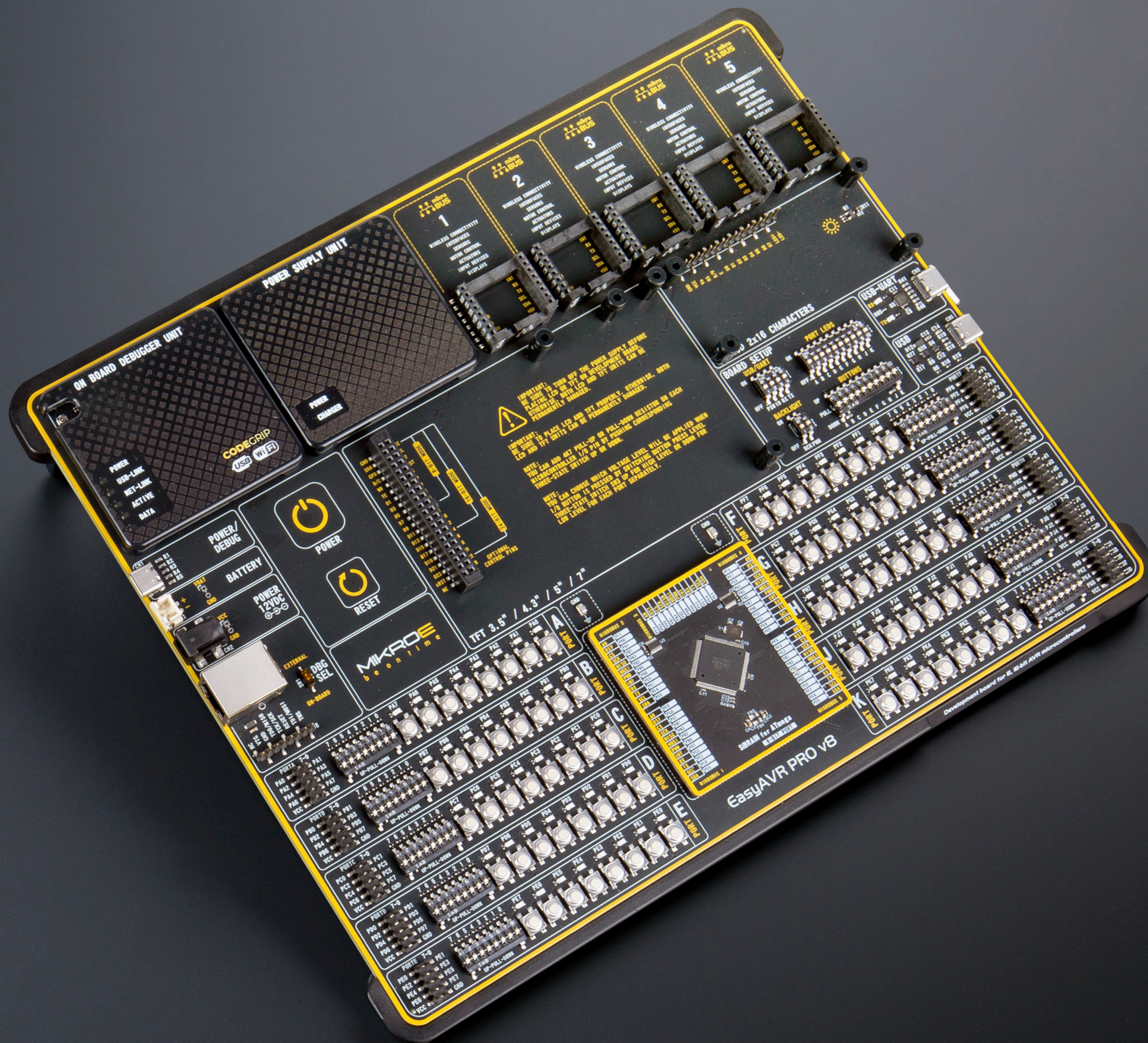
Table of contents

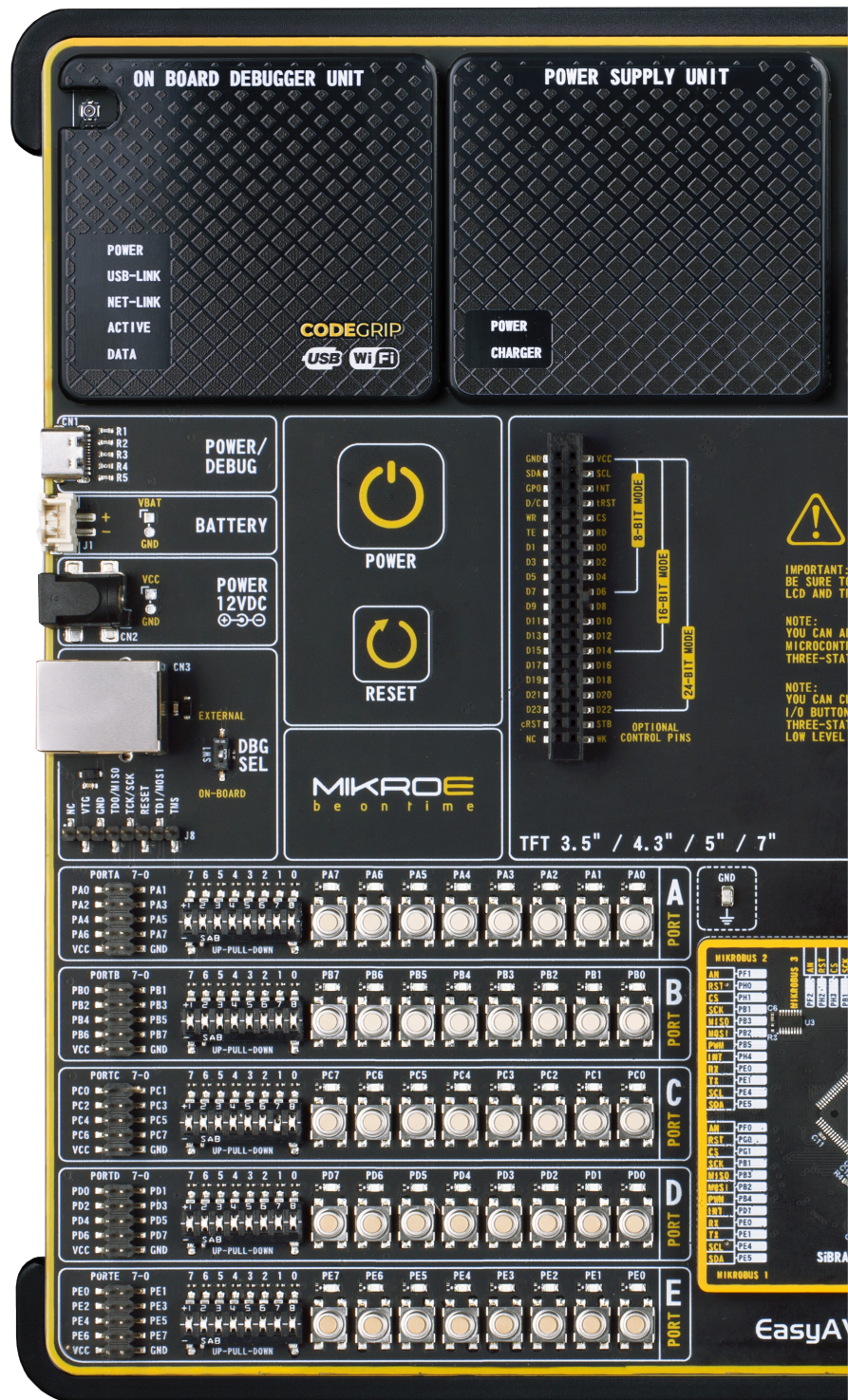
Introduction	5
Development board overview	6
Power supply unit	8
Detailed description	8
PSU connectors	9
Power/debug, USB-C connector	9
Power 12VDC, external power supply	9
Battery power supply	10
Power redundancy and uninterrupted power supply (UPS)	10
Powering up the development board	11
Dual power supply	11
CODEGRIP – programmer/debugger module	12
DBG selection	13
Connectivity	14
SiBRAIN	16
INPUT/OUTPUT section	18
EXPANDED ports	18
PORT buttons	18
BUTTONS DIP switch	18
UP-PULL-DOWN switch	18
PORT LEDs	18
2x5 pin headers	19
2x20 display connector	20
1x16 display connector	21
mikroBUS™ sockets	22
Click boards™	23
Communication	24
USB-UART	24
USB	24
Additional GNDs	25
What's Next?	30

EasyAVR PRO v8 is a development board designed for rapid development of embedded applications. Redesigned from the ground up, it offers broad set of standard, as well as several unique features never seen before in the world of embedded electronics: programming and debugging over WiFi network, support for a large number of high pin count 8/16 bit AVR® microcontrollers by Microchip, regardless of their pin number, and more.

The development board is designed so that the developer has everything that might be needed, following the Swiss Army knife concept: a highly advanced programmer/debugger module, a powerful and clean power supply module, a huge set of connectivity options including USB, UART, as well as set of MIKROE proprietary standards and technologies, including the well-established mikroBUS™ standard, a standardized SiBRAIN socket, and a standardized 2x20 display connector. A number of interactive options is also available, including buttons, LEDs, switches, and more... All these features are packed on a single development board, which itself uses innovative manufacturing technologies, delivering fluid and immersive working experience.

EasyAVR PRO v8 development board is also an integral part of the MIKROE rapid development ecosystem. Natively supported by the MIKROE Software toolchain, backed up by hundreds of different Click board™ designs with their number growing on a daily basis, it covers many different prototyping and development aspects, thus saving precious development time.





Development board overview

The EasyAVR PRO v8 development board features a clean and intuitive layout, allowing the user to instantly understand how to set it up and how to easily tune it according to needs. The development board is divided into several sections, arranged so that all the related interactive components such as switches, buttons, indicators, and connectors, are logically positioned and grouped together. Each section of the development board contains components important for a reliable operation of the board itself. The Power Supply Unit (PSU), the CODEGRIP programmer/debugger module, and five mikroBUS™ sockets are located at the upper section of the development board. This is where the microcontroller unit (MCU) is powered from, programmed, and interfaced with various Click boards™.

The **PSU module** provides a clean, regulated voltage for the development board. It can use a wide range of external power sources, including a battery, an external 12V power supply, and a power source over the USB Type-C (USB-C) connector. It supports the power OR-ing function for uninterrupted operation. The onboard PSU module regulates, filters, and distributes the power across all the connected peripherals. The development board is equipped with two touch-sensitive buttons labeled as POWER and RESET. These buttons are used to power up the board and reset the MCU. Their sleek design and flawless responsiveness add up to the whole experience. These touch-sensitive buttons are resistant to wear over time and do not exhibit any bouncing effect, unlike mechanical switches.

The powerful **CODEGRIP module** supports a wide range of different high pin count 8/16 bit AVR® MCUs, produced by Microchip. It allows in-place programming and debugging of all supported microcontrollers, seamless integration with the MIKROE software environment, and some powerful and unique features such as the programming/debugging over WiFi; a feature that will revolutionize the way that the embedded applications are developed.

The CODEGRIP module uses the USB-C connector for a reliable and secure connection with the personal computer [host PC]. It does not require any additional drivers because it utilizes an HID driver model, natively supported by the computer's operating system [OS]. The USB-C connector is also used to power the development board, simplifying the cable management.

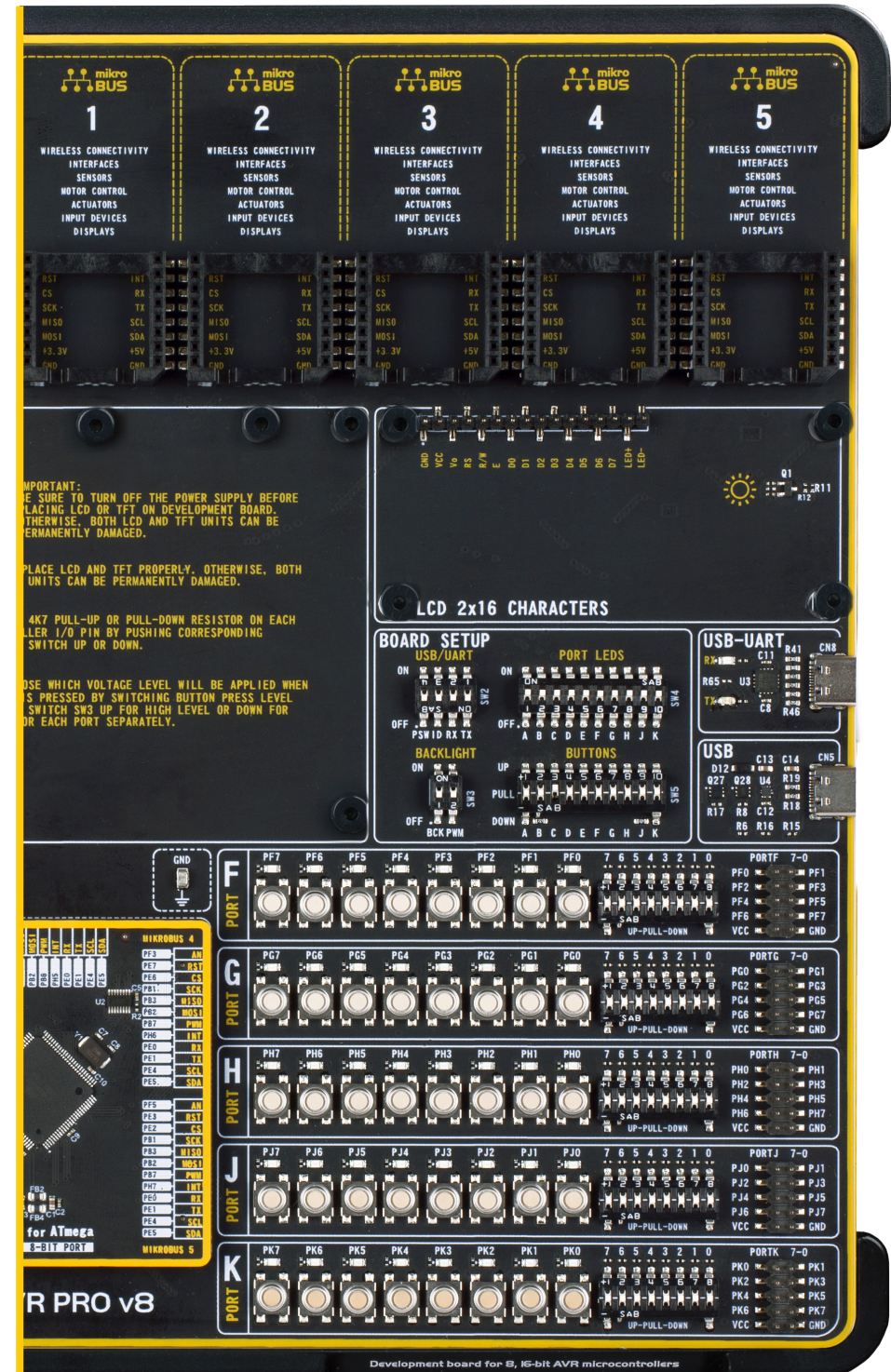
EasyAVR PRO v8 offers **five improved mikroBUS™** sockets, allowing interfacing with a vast amount of electronic circuits and reference designs, standardized under the Click board trademark. Click boards™ are simple to use, require no additional hardware configuration and can be easily connected to the development board by inserting them into any of the available mikroBUS™ sockets. A new design of the mikroBUS™ socket allows even easier interfacing with the Click board™ line of products: it has a sturdier design which helps aligning the Click board™ correctly. To read more about development improvements and huge benefits offered by the mikroBUS™ and Click board™ line of products, visit the official MIKROE web page at www.mikroe.com

EasyAVR PRO v8 development board is equipped with **two display connectors**, located in the middle section of the board. One connector is a single row 16-pin header which supports 2x16 characters Liquid Crystal Display (LCD) in 4-bit mode, offering an optional PWM backlight driving feature. The second display connector is a standardized 2x20-pin female socket, which supports a vast number of display boards, featuring different display modules, such as **TFT Board line of products**. TFT Board displays come in different sizes, they support various resolutions, and they feature different capabilities. All these display boards can be easily mounted to the existing connector offering complete freedom of choice. For more information, please visit the official MIKROE web page at www.mikroe.com

The **I/O (Input/Output) section** occupies the lower part of the development board and contains available MCU pins routed to 2x5-pin headers for easy access. All of them are equipped with configurable pull-up or pull-down resistors, buttons for applying logic states to MCU pins, and LED indicators. Pins are divided into groups following the grouping concept used on the MCU itself. This section is where the most interaction with the MCU takes place.

Communication options such as **USB-UART** and **USB DEVICE** are also included. The respective USB and USB-UART connectors are positioned at the edges of the development board, so they can be easily accessed. This is also true for the power connectors, as well as for the external programmer/debugger connector. This allows clean and clutter-free cable management.

EasyAVR PRO v8 development board is supported by a powerful **CODEGRIP Suite**, offering complete control over the EasyAVR PRO v8 development board. It is used to intelligently manage programming and debugging tasks, and to configure various other options and settings, providing visual feedback through its clean and comprehensive Graphical User Interface [GUI]. To better understand how to operate and configure EasyAVR PRO v8 development board and its integrated CODEGRIP module, a separate manual is provided at www.mikroe.com/manual/codegrip



Power supply unit

The power supply unit [PSU] [1] provides clean and regulated power, necessary for proper operation of the development board. The host MCU, along with the rest of the peripherals, demands regulated and noise-free power supply. Therefore, the PSU is carefully designed to regulate, filter, and distribute the power to all parts of the development board. It is equipped with three different power supply inputs, offering all the flexibility that EasyAVR PRO v8 needs, especially when used on the field. In the case when multiple power sources are used, an automatic power switching circuit with predefined priorities ensures that the most appropriate will be used.

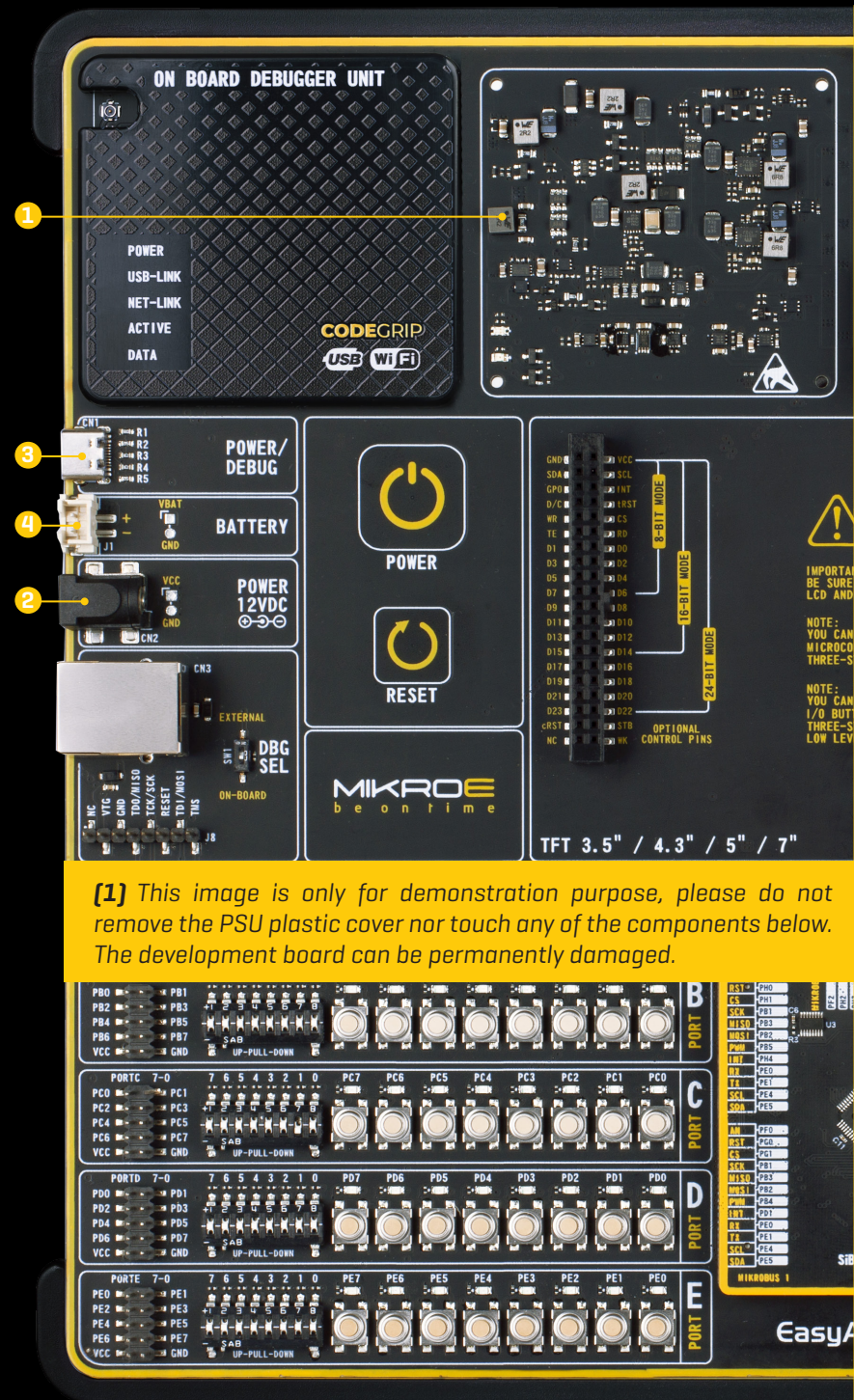
The PSU also contains a reliable and safe battery charging circuit, which allows a single-cell Li-Po/Li-Ion battery to be charged. Power OR-ing option is also supported, providing uninterrupted power supply [UPS] functionality when an external or USB power source is used in combination with the battery.

The digitally controlled programmable voltage output can be used as a voltage reference for various purposes, including A/D or D/A converters, comparators, and other peripherals that require or can use an external reference voltage. The programmable voltage output can be controlled over the CODEGRIP Suite.

Detailed description

The PSU has a very demanding task of providing power for the host MCU and all the peripherals onboard, as well as for the externally connected peripherals. One of the key requirements is to provide enough current, avoiding the voltage drop at the output. Also, the PSU must be able to support multiple power sources with different nominal voltages, allowing switching between them by priority. The PSU design, based on a set of high-performance integrated devices produced by Microchip, ensures a very good quality of the output voltage, high current rating, and reduced electromagnetic radiation.

At the input stage of the PSU, the MIC2253, a high-efficiency boost regulator IC with overvoltage protection ensures that the voltage input at the next stage is well regulated and stable. It is used to boost the voltage of low-voltage power sources [a Li-Po/Li-Ion battery and USB], allowing the next stage to deliver well-regulated 3.3V and 5V to the development board. A set of discrete components are used to determine if the input power source requires a voltage boost.



[1] This image is only for demonstration purpose, please do not remove the PSU plastic cover nor touch any of the components below. The development board can be permanently damaged.



Figure 1: Power supply unit view

When multiple power sources are connected at once, this circuitry is also used to determine the input priority level: externally connected 12V PSU [2], power over USB [3], and the Li-Po/Li-Ion battery [4]. The transition between available power sources is seamless, providing uninterrupted operation of the development board.

The next PSU stage uses two MIC28511, synchronous step-down (buck) regulators, capable of providing up to 3A at their output. The MIC28511 IC utilizes the HyperSpeed Control® and HyperLight Load® architectures, providing an ultra-fast transient response and high efficiency for light loads. Each of the two buck regulators is used to supply power to the corresponding power supply rail (3.3V and 5V), throughout the entire development board and connected peripherals.

PSU connectors

As explained, the advanced design of the PSU allows several types of power sources to be used, offering unprecedented flexibility: when powered by a Li-Po/Li-Ion battery, it offers an ultimate degree of autonomy. For situations where the power is an issue, it can be powered by an external 12VDC power supply, connected over the 5.5mm barrel connector. Power is not an issue even if it is powered over the USB cable. It can be powered over the USB-C connector, using power supply delivered by the USB HOST (e.g. personal computer), USB wall adapter, or a battery power bank.

There are three power connectors available, each with its unique purpose:

POWER/DEBUG, USB-C connector [3]

BATTERY, standard 2.5mm pitch XH battery connector [4]

POWER 12VDC, barrel type male 2mm x 6.5mm power connector [2]

Power/debug, USB-C connector

The development board can be powered over the USB-C connector, labeled as POWER/DEBUG [3]. This connector provides power from the USB host, USB power bank, or USB wall adapter. When powered over the USB connector, the available power will depend on the source capabilities.

Maximum power ratings, along with the allowed input voltage range in the case when the USB power supply is used, are given in the table *Figure 2*.

USB Power Supply				
Input Voltage [V]		Output Voltage [V]	Max Current [A]	Max Power [W]
MIN	MAX	3.3	1.8	5.94
4.4	5.5	5	1.4	7
		3.3 & 5	0.8 & 0.8	6.64

Figure 2: USB Power supply table

When using PC as a power source, the maximum power can be obtained if the host PC supports the USB 3.2 interface, and is equipped with USB-C connectors. If the host PC has a USB 2.0 interface, it will be able to provide the least power, since only up to 500 mA (2.5W at 5V) is available from the host in that case.

Note that when using long USB cables or USB cables of low quality, the voltage may drop outside the rated operating voltage range, causing unpredictable behavior of the development board.

If the host PC is not equipped with the USB-C connector, a Type A to Type C USB adapter may be used. **NOTE**

Power 12VDC, external power supply

An external 12V power supply can be connected over the DC barrel connector, labeled as POWER 12VDC [2]. When using an external power supply, it is possible to obtain an optimal amount of power, since one external power supply unit can be easily switched for another, while its power and operating characteristics can be decided per application. The development board allows maximum current of 3A per power rail, when using an external 12V power supply.

The development board will be able to maintain its operating voltages within the specified limits, as long as the voltage of the external power supply stays within the range stated below, in the table. Having in mind all the additional peripherals that can be connected to the development board, as well as their power consumption, the external power supply should be considered as a primary power source, especially for the most power demanding applications.

Maximum power ratings, along with the allowed input voltage range in the case when the external power supply is used, are given in the table *Figure 3*.

External Power Supply				
Input Voltage [V]		Output Voltage [V]	Max Current [A]	Max Power [W]
MIN	MAX	3.3	2.8	9.24
10.6	14	5	2.8	14
		3.3 & 5	2.8 & 2.8	23.24

Figure 3: External Power supply table

NOTE When connecting an external power supply over a barrel connector, make sure that the polarity of the barrel connector is matched with its counterpart on the development board, according to the image printed next to the male DC connector.

Battery power supply

When powered by a single-cell Li-Po or Li-Ion battery, the development board offers an option to be operated remotely. Combined with the fact that the board can be remotely programmed and debugged over the WiFi network, the EasyAVR PRO v8 development board allows complete autonomy, allowing it to be used in some very specific situations: hazardous environment, agricultural application and etc.

NOTE It is advised to disable the battery charging circuitry if there is no battery connected to the EasyAVR PRO v8 development board. This can be done using CODEGRIP Suite. For more information, please consult the CODEGRIP manual on the following link: www.mikroe.com/manual/codegrip

The battery connector used on the development board is a 2.5mm pitch XH connector. It allows a range of Li-Po and Li-Ion batteries to be used. The development board offers battery charging functionality from both the USB connector, and the external power supply. The battery charging circuitry of the PSU module manages the battery charging process, allowing the optimal charging conditions and longer battery life. Charging process is indicated by a CHARGER LED indicator. The battery charging current can be configured by

using the CODEGRIP Suite, which offers a choice between 100mA and 500mA when the USB power supply is used, or between 100mA and 200mA, when the external 12V power supply is used. In the case when the EasyAVR PRO v8 development board is powered down, the charging current will be set to 500mA by default [200mA with the external power supply].

If both the external 12V power supply and the USB cable are connected to the development board, the battery will be charged from the external 12V power supply, thus minimizing the USB power consumption.

Maximum power ratings at fully charged battery, along with the allowed input voltage range when the battery power supply is used, are given in the table *Figure 4*.

Battery Power Supply				
Input Voltage [V]		Output Voltage [V]	Max Current [A]	Max Power [W]
MIN	MAX	3.3	1.6	5.28
3.5	4.2	5	1.2	6
		3.3 & 5	0.7 & 0.7	5.81

Figure 4: Battery Power Supply table

Using USB hubs, long USB cables, and low-quality USB cables, may cause a significant USB voltage drop, which can obstruct the battery charging process.



Power redundancy and uninterrupted power supply (UPS)

The PSU module supports power supply redundancy: it will automatically switch to the most appropriate power source if one of the connected power sources fails or becomes disconnected. The power supply redundancy also allows for an uninterrupted operation [e.g. UPS functionality, the battery will still provide power if the USB cable is removed, without resetting the MCU during the transition period].

Powering up the development board

Two touch-sensitive buttons are used to power up and reset the EasyAVR PRO v8 development board. These capacitive buttons are processed by two AT42QT1011, digital burst mode charge-transfer sensors, specifically designed for human-machine interfaces [HMI], from Microchip. The AT42QT1011 allows very responsive and reliable touch detection for the connected button pad.

As soon as a valid power source is connected, the development board will enter the Stand-By mode. When the capacitive POWER button is pressed, the PSU module will start distributing the power to the rest of the development board. This is indicated by the POWER LED indicator, located on the PSU module itself.

Right under the POWER LED, there is a CHARGE LED, indicating the charging status of the Li-Po/Li-Ion single cell battery, if connected. The complete battery power supply section, including the battery charger circuit, is explained in the respective chapter of this manual.

Below the POWER capacitive button **[1]**, there is a RESET capacitive button **[2]** which is not entirely power-related, but it has a similar function: it is routed to the MCLR pin of the MCU, allowing the RESET function to be performed.

Dual power supply

EasyAVR PRO v8 development board supports both 3.3V and 5V power supply on a single board. Advanced PSU module provides the possibility to chose power supply for board and host MCU, between 3.3V [default] and 5V. This setting can be easily configured from CODEGRIP Suite, and this feature greatly increases the number of supported MCUs.

To easily indicate the power supply configuration, the previously mentioned POWER LED will also have a dual function. It lights up GREEN when 3.3V power supply is configured, and lights up BLUE when 5V power supply is chosen.

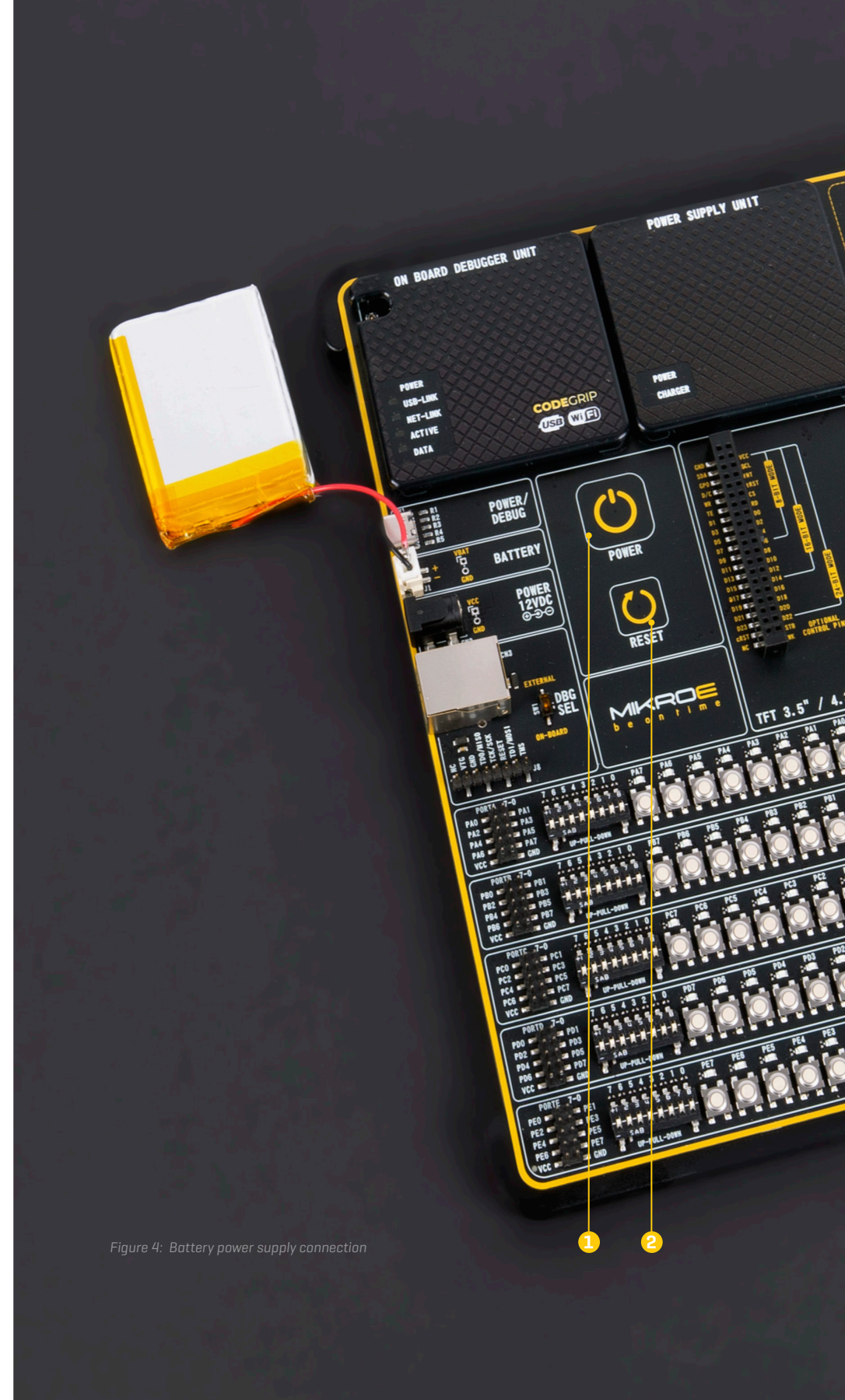


Figure 4: Battery power supply connection

CODEGRIP

programmer / debugger module

Envisioned as the unified development platform, EasyAVR PRO v8 development board is equipped with the onboard CODEGRIP programming/debugging module, which supports various high pin count 8/16 bit AVR® MCUs, produced by Microchip. The CODEGRIP module can be interfaced with the host computer over the USB-C connector.

Besides the USB cable, the CODEGRIP module **[1]** can be accessed over the WiFi network. This is a revolutionary new feature, which allows some unique usage scenarios, currently not available on any other programming/debugging solution in the world. The WiFi connectivity option of the CODEGRIP module offers a complete autonomy of the development board. Running in hazardous environment while debugging the software in real time, programming the MCU with a new software during exposure, having the sensor responses collected and logged remotely from several different base points, debugging a drone firmware while it is in mid-air... These are just a simple examples of what EasyAVR PRO v8 development board can offer.

CODEGRIP module is equipped with LED indicators that provide visual feedback about its status:

POWER (GREEN) indicates that the development board is powered on

USB-LINK (YELLOW) After the host OS completes the USB enumeration of the CODEGRIP module, this LED will indicate that the connection has been established

NET-LINK (AMBER) When the CODEGRIP module is connected to the WiFi network, this LED will indicate that the connection has been established

ACTIVE (RED) Indicates the operational state of the CODEGRIP module: when CODEGRIP module is in the bootloader mode, this indicator will blink. Normal operation of the CODEGRIP module is indicated by the ACTIVE LED being constantly turned ON

DATA (BLUE) Indicates that there is a data transfer ongoing between the MCU and the CODEGRIP module

The onboard CODEGRIP module **[1]** requires no additional drivers, as it utilizes a HID driver model, which is natively supported by the computer OS. This makes its installation very easy and straightforward in the case when the USB cable is used. As soon as the USB cable is connected to the host PC, the CODEGRIP module is enumerated and the development board is ready to be used.

CODEGRIP module is supported by CODEGRIP Suite. Detailed explanation on how to configure and use the CODEGRIP module on the EasyAVR PRO v8 development board, can be found in the CODEGRIP manual, and can be downloaded on the following link: www.mikroe.com/manual/codegrip

EXT PROG/DBG PINOUT

RJ-45

1.	TDI/MOSI
2.	NC
3.	VDD
4.	GND
5.	TDO/MISO/DATA
6.	TCK/SCK
7.	RST
8.	TMS

1		NC
2		VDD
3		GND
4		TDO/MISO/DATA
5		TCK/SCK
6		RST
7		TDI/MOSI
8		TMS

DBG selection

The EasyAVR PRO v8 development board is equipped with the RJ-45 connector [2], allowing an external programmer/debugger to be connected. The connector supports a wiring pinout compatible with Microchip® ICD external programmers/debuggers. In addition, there is a 1x8 male pin header, with a wiring pinout compatible with Microchip® PICKit 4 external programmers/debuggers.

The DIP switch located next to the RJ-45 connector allows control of the interface between onboard CODEGRIP module and target MCU:

ONBOARD (down): Interface is enabled. If an external debugger probe-device is connected, there is a possible collision in communication.

EXTERNAL (up): Interface is disabled. External debugger probe-device can reliably communicate with target MCU.

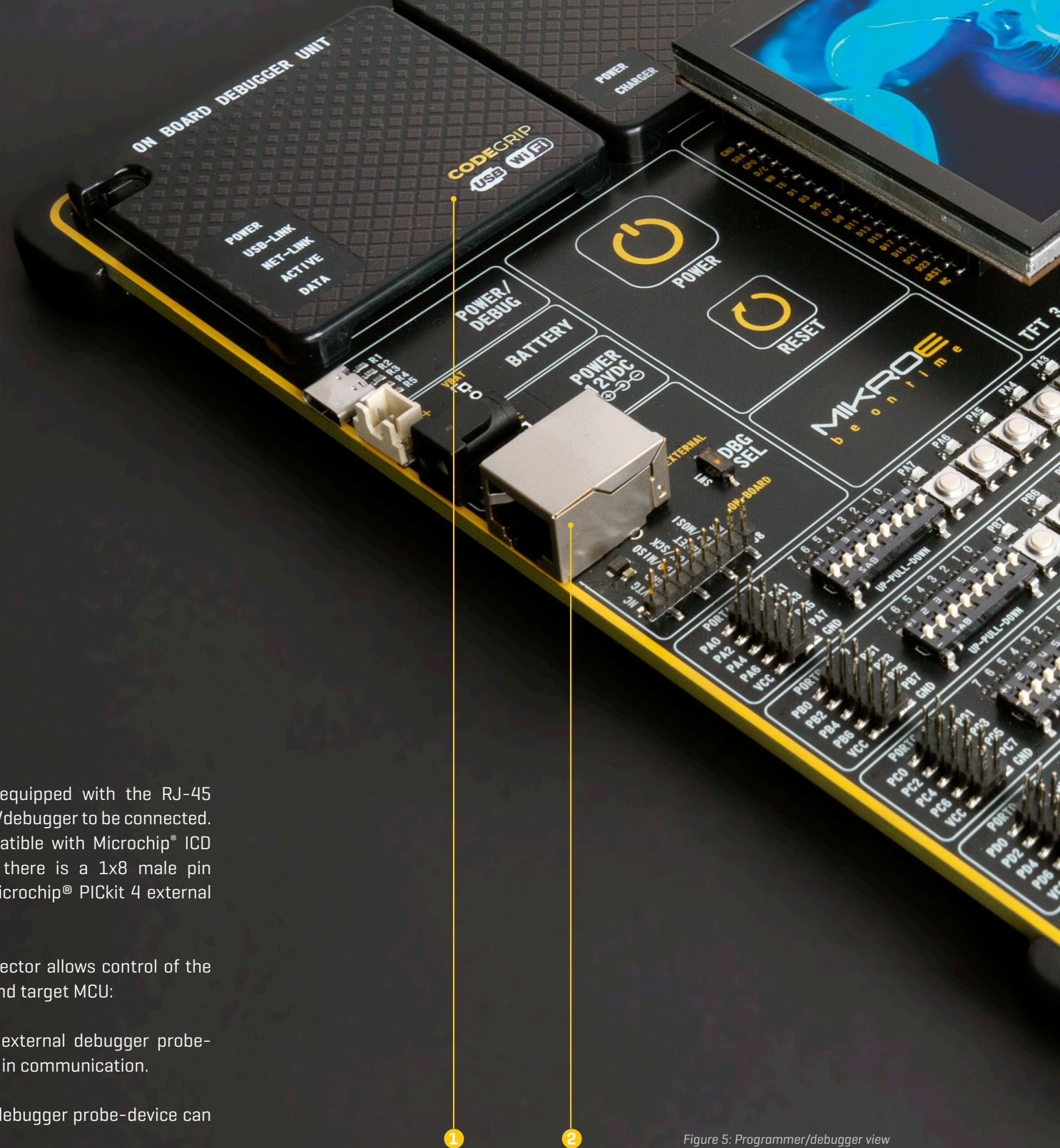


Figure 5: Programmer/debugger view

Connectivity

One of the key features of the EasyAVR PRO v8 development board is its connectivity.

It features a diverse amount of connecting options, making the board very versatile, adaptable to any situation, and very easy to work with.

It has two display connectors [1x16 LCD connector and 2x20 display connector], USB-UART, USB HOST/DEVICE, an external programmer/debugger connector and many more. The PORT I/O section is the most distinctive connectivity option, which takes up the entire lower half of the board. It allows direct connection to the available MCU pins. This section also contains LEDs for visual indication of pin states, BUTTONS for applying the desired logic states to the pins, and DIP switches for configuring pull-up or pull-down resistors.

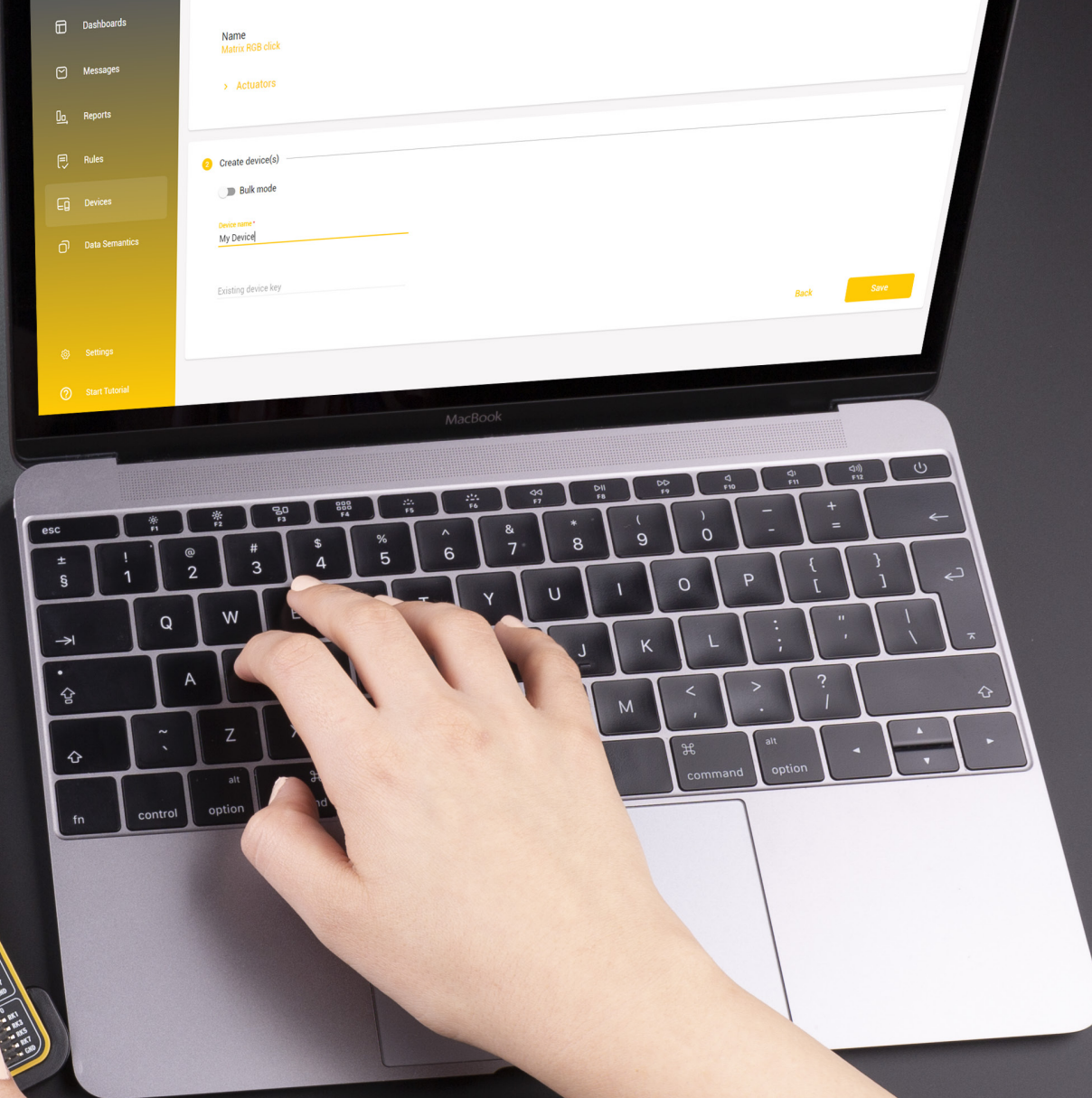
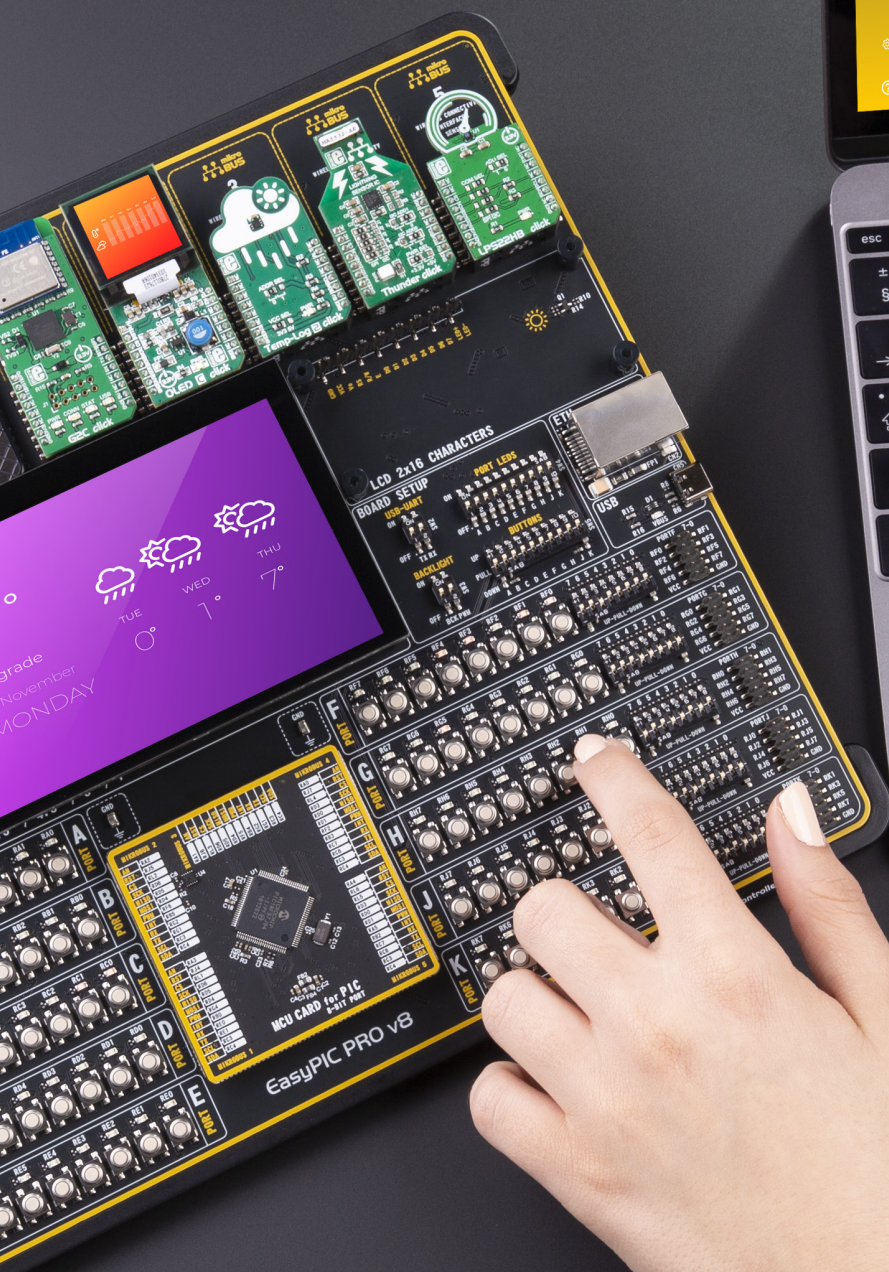
All the LEDs, buttons, and headers are logically organized and grouped as PORTS, following the pin organization topology of the MCU.

The presence of five standardized mikroBUS™ sockets is something that makes the EasyAVR PRO v8 development board very special: the world of Click boards™ is now just under your fingertips. By combining up to 5 different Click boards™, virtually an unlimited number of combinations is possible, considering the fact that the Click board™ repository already has several hundreds of various Click boards™, with more added on a daily basis.

Tight integration of the EasyAVR PRO v8 board with the whole MIKROE ecosystem, allows seamless and effortless prototyping, and truly rapid embedded application development. For more info about the mikroBUS™ standard and the Click board™ line of products, please visit the official MIKROE web page at

www.mikroe.com





Easily create an IoT Weather Station with the EasyAVR PRO v8 development board.

Use the following tools:

- **EasyAVR PRO v8 development board**
- **SiBRAIN for ATmega**
- **TFT Board 5**
- **G2C click**
- **OLED C click**
- **Temp-Log 2 click**
- **Thunder click**
- **LPS22HB click**

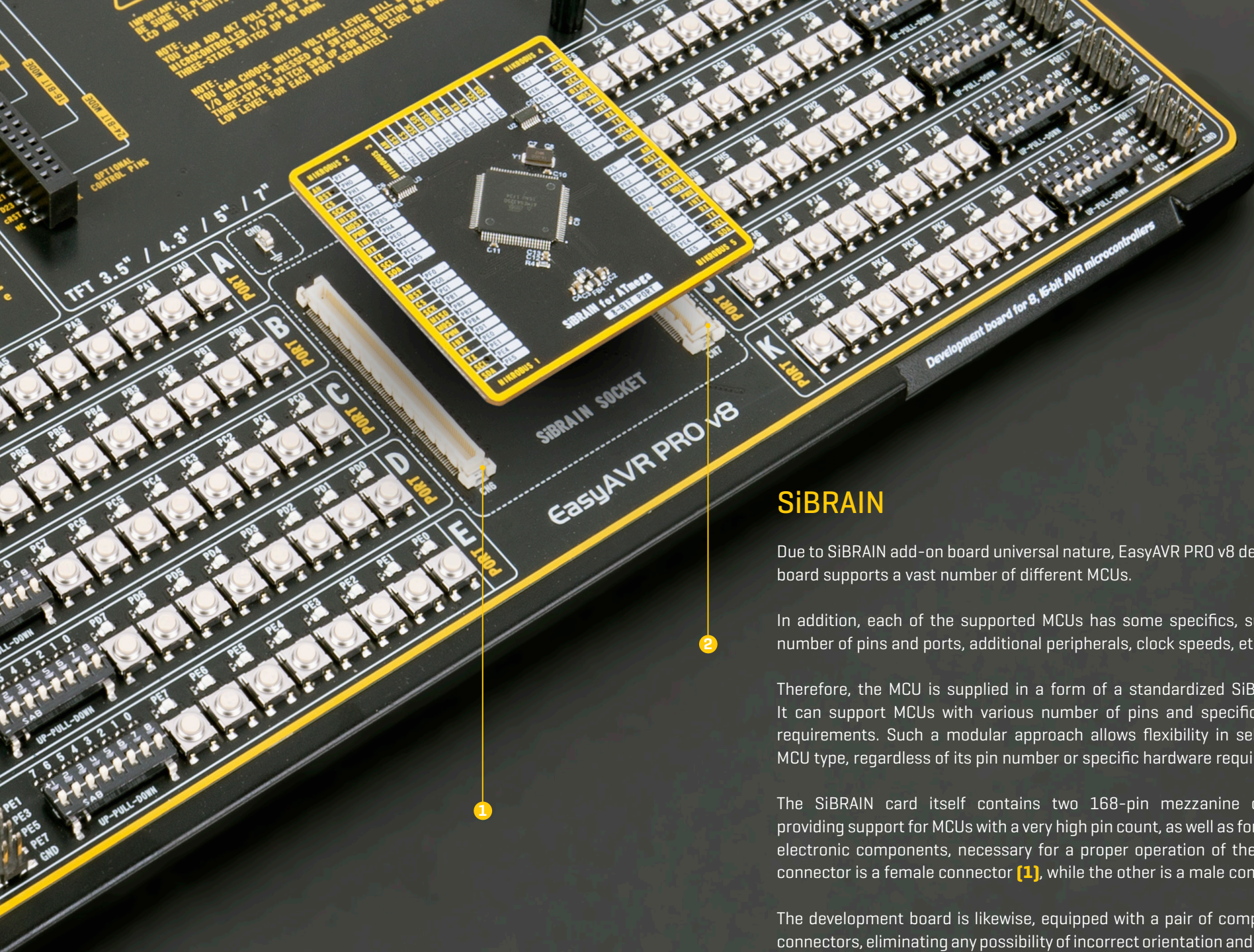


Figure 6: Main board with SiBRAIN socket view

SiBRAIN

Due to SiBRAIN add-on board universal nature, EasyAVR PRO v8 development board supports a vast number of different MCUs.

In addition, each of the supported MCUs has some specifics, such as the number of pins and ports, additional peripherals, clock speeds, etc.

Therefore, the MCU is supplied in a form of a standardized SiBRAIN card. It can support MCUs with various number of pins and specific hardware requirements. Such a modular approach allows flexibility in selecting the MCU type, regardless of its pin number or specific hardware requirements.

The SiBRAIN card itself contains two 168-pin mezzanine connectors providing support for MCUs with a very high pin count, as well as for additional electronic components, necessary for a proper operation of the MCU. One connector is a female connector **[1]**, while the other is a male connector **[2]**.

The development board is likewise, equipped with a pair of complementary connectors, eliminating any possibility of incorrect orientation and placement of the SiBRAIN card.

Besides these two connectors, an SiBRAIN card can also include multiplexing circuits, crystal oscillators/clock generators, voltage filtering capacitors, and some other MCU-specific components, necessary for reliable operation.

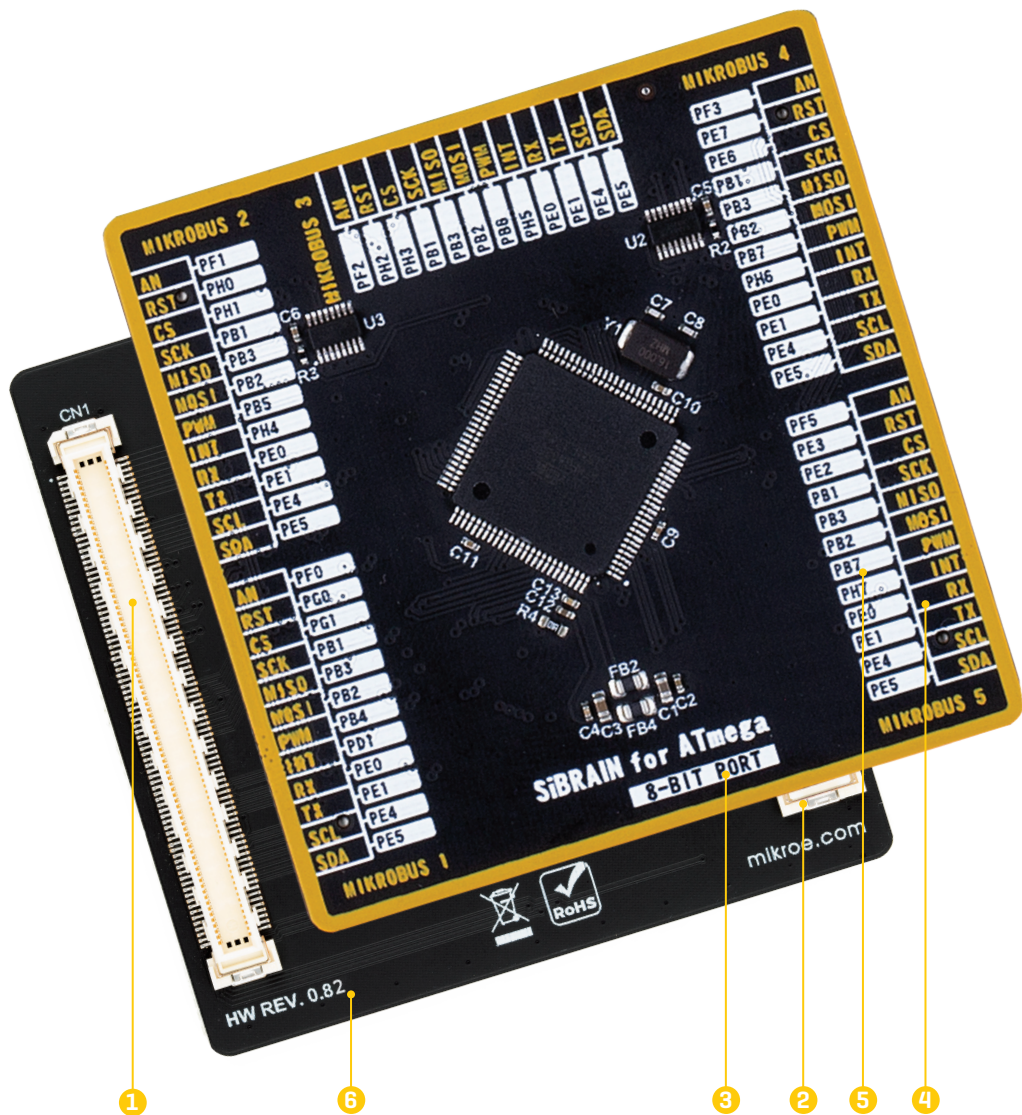


Figure 7: SiBRAIN card back and front view

This makes each SiBRAIN card self-contained unit, allowing the development board to operate on a logic level, not having to facilitate specific requirements of many different MCUs. This also allows the MCU to be freely chosen, not having to worry about the pin compatibility and similar issues. Most importantly, it allows very simple swapping between different MCU types during the development phase, without any hardware interventions.

From the top side, each SiBRAIN card has a clearly labeled MCU type it is designed for [SiBRAIN for ATmega], as well as its PORT width, printed just below the MCU type label [8-BIT PORT] **[3]**.

In addition, pins are grouped in accordance to mikroBUS™ sockets to which they are routed. Therefore, there are 5 groups of pins. The pins labeled with yellow color **[4]** belong to mikroBUS sockets, while the white labels **[5]** represent corresponding pins on the MCU.

On the bottom side of the SiBRAIN card, users can find the hardware revision number of the card itself **[6]**.

NOTE The picture shown is for illustration purpose only. Actual SiBRAIN card may vary depending on the installed MCU.

Before you plug the SiBRAIN card into the socket, make sure that the power supply is turned off. Check the SiBRAIN card orientation so it matches the printed outline of the SiBRAIN card on the development board. Place the SiBRAIN card so that both connectors are properly aligned with their onboard counterparts. Then gently press down the SiBRAIN card, if there is a physical resistance, please do not try to force the SiBRAIN card into the socket.



INPUT / OUTPUT section

In general, I/O pins of any MCU are internally grouped as PORTs. Such pin grouping scheme is kept throughout the development board as well, offering a clean and organized interface.

EXPANDED ports

There is a total of ten 8-bit ports, ranging from PORTA to PORTK (PORTI excluded). All ten ports are EXPANDED PORTS, located at the lower left and right side of the board **[1]**, each containing a set of eight buttons, eight LEDs, a single eight-pole DIP switch, and a single 2x5 pin header with 2.54mm pitch. These EXPANDED PORTS are labeled according to the MCU PORT they are routed to.

PORT buttons

Port buttons can be used to apply the desired logic state to pins of the MCU PORT they are routed to. These buttons are small tactile SPST switches that work in conjunction with a DIP switch, labeled as BUTTONS **[2]** (also labeled as SW5 on the schematic – separately included). This DIP switch is located in the BOARD SETUP section **[3]**.

BUTTONS DIP switch

This ten-position [poles], tri-state DIP switch, allows the button to apply a LOW logic level to an MCU pin when pressed (connecting it to a reference GND), or to apply a HIGH logic level when pressed (connecting it to the power rail). It can also completely disconnect the button, preventing accidental button presses. To limit the pin current and prevent the excessive inrush of currents when a button is pressed, a protective 220Ω resistor is used, connected in series with the switch. Each position of the BUTTONS DIP switch is used to determine the applied logic level of a button press for the entire PORT, there are ten poles on this DIP switch, allowing control of all ten groups of buttons.

UP position: a button applies HIGH logic level to the corresponding PORT pins [according to 8-bit labeling]

MID position: a button is completely disconnected

LOW position: a button applies LOW logic level to the corresponding PORT pins [according to 8-bit labeling]

UP-PULL-DOWN DIP switch

Besides the buttons, each of the ten EXPANDED PORTS has a single eight-pole, tristate DIP switch **[4]**, labeled as UP-PULL-DOWN (SW7 through SW14 on the schematic – separately included), used to enable a pull-up or a pull-down resistor for the specific pin, or to leave the specific pin in a floating state:

UP position: connects a 4.7 kΩ resistor between the MCU power rail and the pin associated with the particular DIP switch position [a pin is pulled-up]

MID position: disables both pull-up and pull-down resistor connections from the pin associated with the particular DIP switch position, leaving it in a floating state

DOWN position: connects the 4.7 kΩ resistor between the GND and the pin associated with the particular DIP switch position [a pin is pulled-down]

PORT LEDs

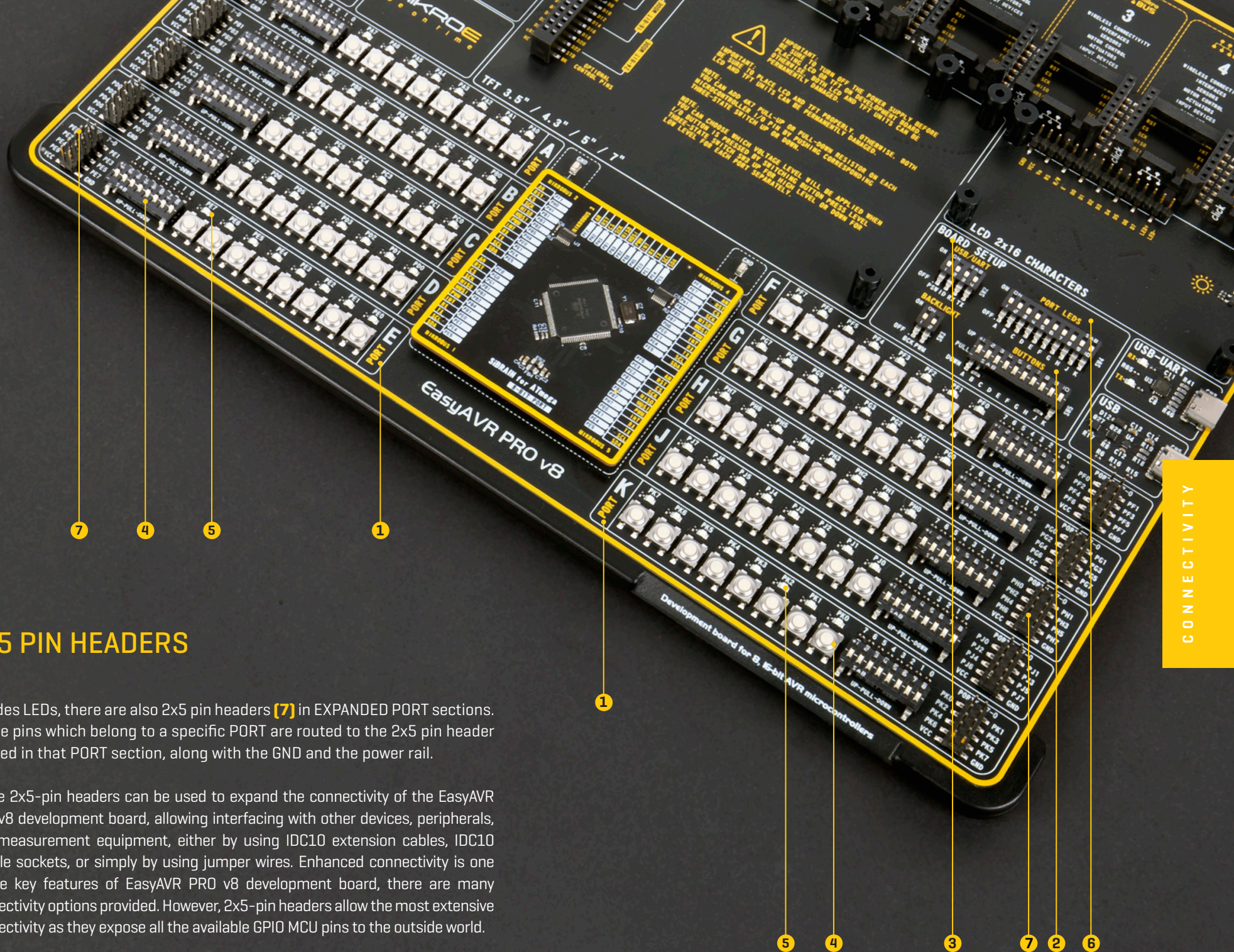
Each PORT contains a group of eight LEDs **[5]**, used to visually indicate a logic state of the specific pin. The maximum current through a single LED is limited with the 4.7k resistor. Each LED is connected to a PORT pin and it is labeled according to the pin's name.

LEDs on each PORT can be disabled, when they are not needed. Having a LED on a communication line or an A/D converter input might alter expected results, since LED represents an additional electrical load on a particular pin.

There is a DIP switch with ten positions [poles], with each pole assigned to a specific PORT. This DIP switch is labeled as PORT LEDS **[6]** on the development board (SW4 on the schematic). A single DIP switch position is used to disable a group of LEDs which belong to a PORT:

ON position (up): enables LEDs for a specific PORT, associated with the particular DIP switch position

OFF position (down): disables LEDs for a specific PORT, associated with the particular DIP switch position



2x5 PIN HEADERS

Besides LEDs, there are also 2x5 pin headers **[7]** in EXPANDED PORT sections. All the pins which belong to a specific PORT are routed to the 2x5 pin header located in that PORT section, along with the GND and the power rail.

These 2x5-pin headers can be used to expand the connectivity of the EasyAVR PRO v8 development board, allowing interfacing with other devices, peripherals, and measurement equipment, either by using IDC10 extension cables, IDC10 female sockets, or simply by using jumper wires. Enhanced connectivity is one of the key features of EasyAVR PRO v8 development board, there are many connectivity options provided. However, 2x5-pin headers allow the most extensive connectivity as they expose all the available GPIO MCU pins to the outside world.

Figure 8: I/O ports view



Figure 9: 2x20-pin board connector view

2x20 display connector

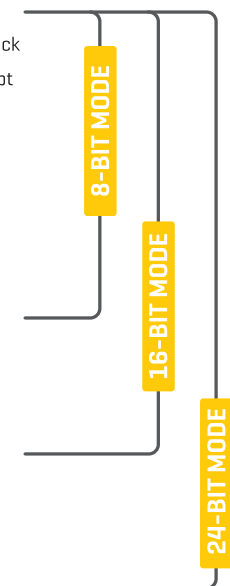
EasyAVR PRO v8 development board features a standardized 2x20-pin display connector **[1]**. This connector consists of the 8080 parallel interface, offering support for displays with up to 8 bits per color (up to 24-bit mode, 16 million colors). Besides the 8080 interface, this connector also contains pins related to touch panel controller, interfaced over dedicated I2C bus lines. The power supply

Make sure to turn off the power supply before placing the display module on the board. Otherwise, the display module or the board can be permanently damaged.



rails are also routed to this connector. Using the standardized pinout ensures compatibility with the existing (i.e. TFT Board Capacitive line of displays), as well as the future versions of display boards. More information can be found at www.mikroe.com/accessories/displays/tft-displays

Ground GND	VCC Power supply
Touch Panel I2C Data SDA	SCL Touch panel I2C Clock
Display GPIO GPO	INT Touch panel interrupt
Display command/data D/C	tRST Display reset
Display write WR	CS Display chip select
Display frame sync TE	RD Display read
Data line D1	D0 Data line
Data line D3	D2 Data line
Data line D5	D4 Data line
Data line D7	D6 Data line
Data line D9	D8 Data line
Data line D11	D10 Data line
Data line D13	D12 Data line
Data line D15	D14 Data line
Data line D17	D16 Data line
Data line D19	D18 Data line
Data line D21	D20 Data line
Data line D23	D22 Data line
Touch panel reset cRST	STB Display stand-by
Not connected NC	WK Touch panel wake-up



1x16 display connector

Liquid Crystal Display (LCD) is a cheap and popular way of representing application results, messages, or some other type of information to users. EasyAVR PRO v8 natively supports 2x16 characters LCD module, connected in 4-bit mode. It offers a dedicated 1x16-pin header **[2]** that can host a compatible LCD. Each pin of the connector is labeled on the development board and should be connected with the respective pin of the LCD:

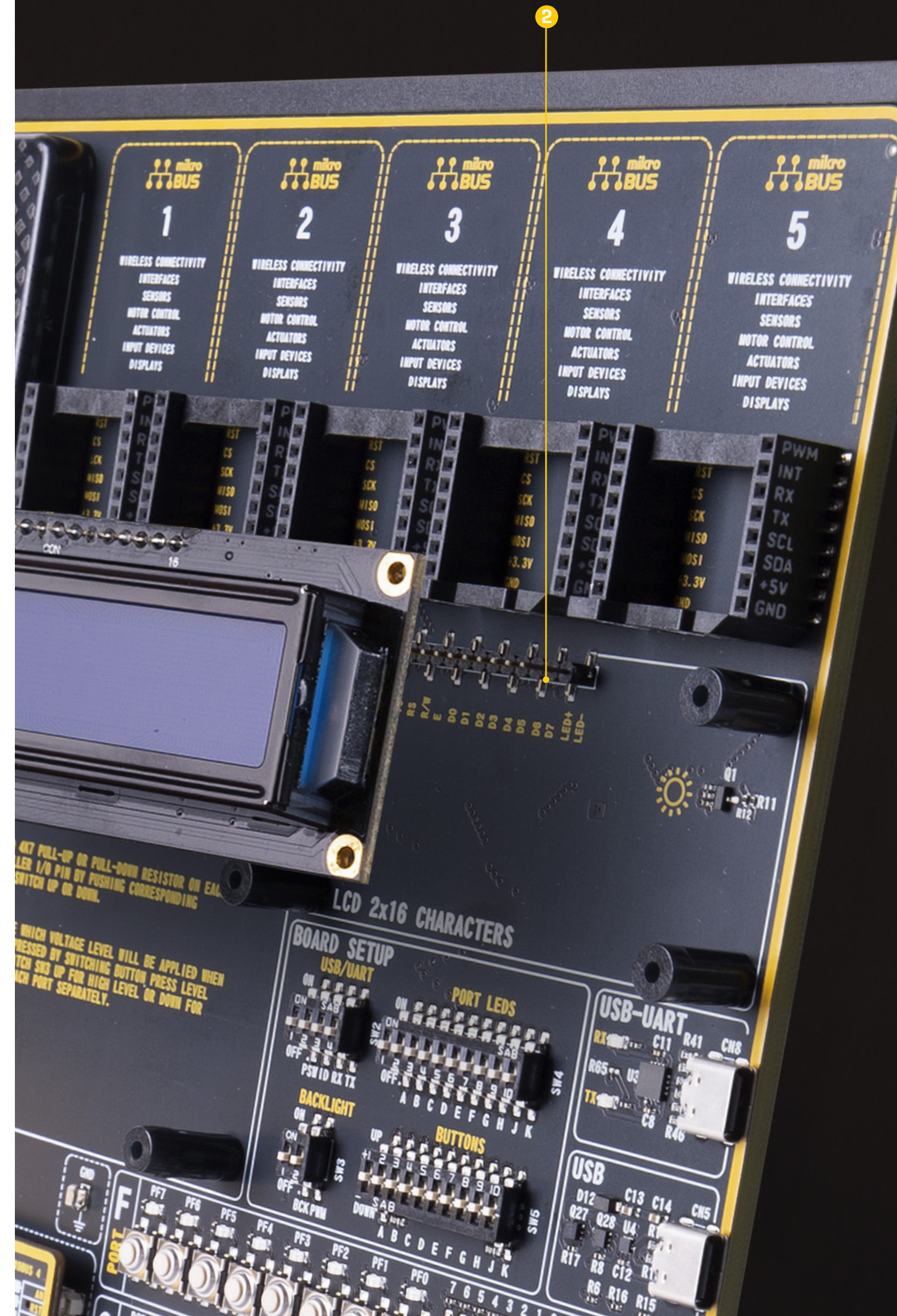
GND	Ground
VCC	LCD power supply
Vo	LCD contrast
RS	Register select
R/W	LCD Read/Write mode select
E	LCD enable
D0	Lower four data lines
D1	
D2	
D3	
D4	Upper four data lines
D5	
D6	
D7	
LED+	LCD backlight anode
LED-	LCD backlight cathode

Figure 10: 1x16 display header view

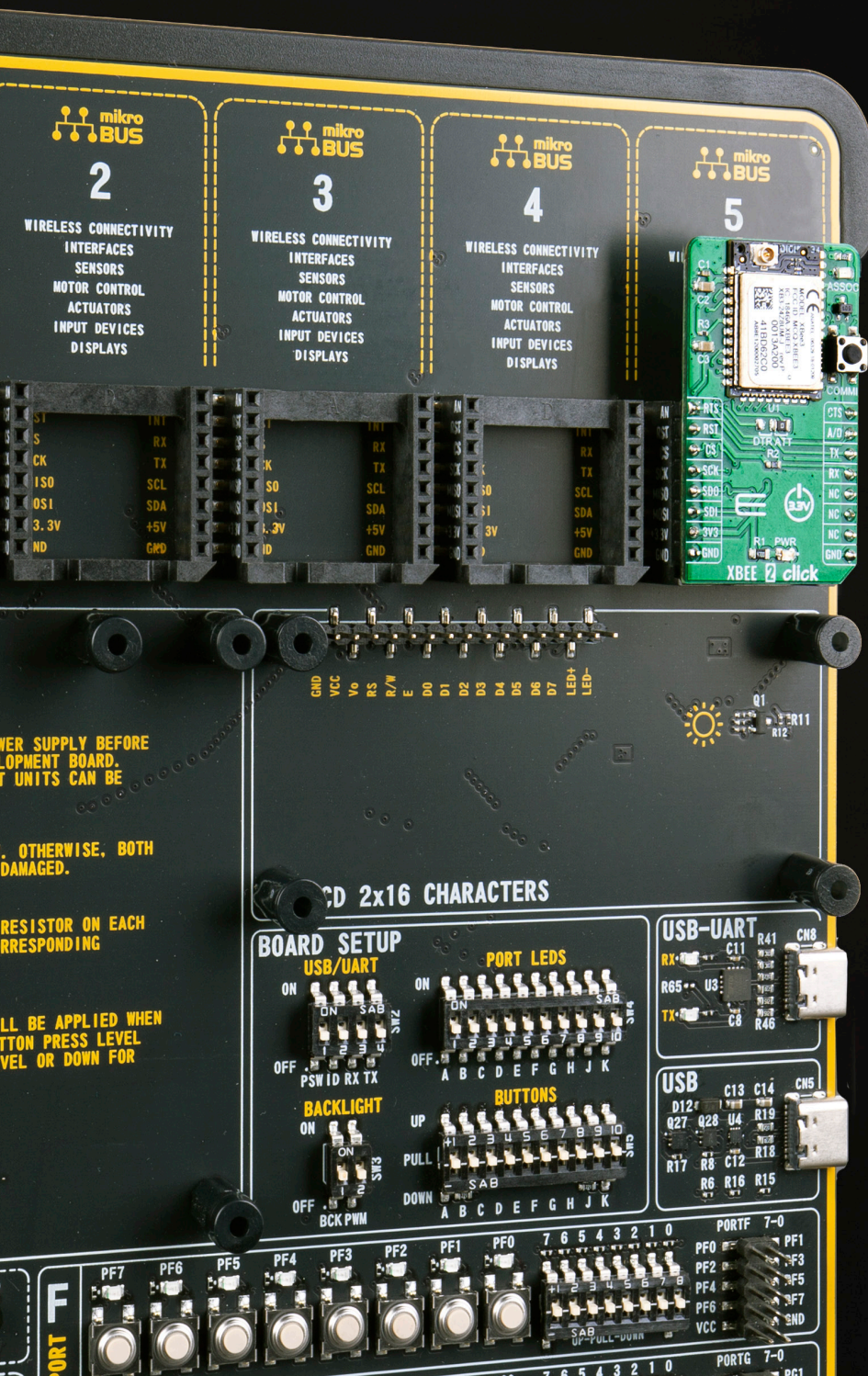
To configure optional backlight settings of the LCD, a two-pole DIP switch can be used, labeled as BACKLIGHT, located in the BOARD SETUP section of the board:

- SW3.1** **ON (up):** LCD backlight is ON;
OFF (down): LCD backlight is OFF
- SW3.2** **ON (up):** PWM signal from the MCU controls the LCD backlight brightness;
OFF (down): the brightness amount is fixed and can't be controlled by the MCU

NOTE There are four plastic spacers used to provide physical support for both types of connected displays, ensuring a reliable connection and preventing bending of their pins.



mikroBUS™ sockets



The superior connectivity features of the EasyAVR PRO v8 development board are rounded up with five standardized mikroBUS™ host connectors. It is a considerable upgrade for the board, as it allows interfacing with the vast amount of Click boards™.

mikroBUS™ is the add-on board standard that offers maximum expandability with the smallest number of pins.

More information at www.mikroe.com/mikrobus

All the mikroBUS™ sockets are now redesigned and improved. They became much sturdier, allowing a better grip of the Click board™. In addition to added horizontal supports between two 8-pin connectors, the right lower edge is chamfered at the angle of 45°, the same as the Click board™, making it seamlessly fit into the mikroBUS™ socket. The new mikroBUS™ socket is now a fully-fledged, standardized monolithic component with all its pins clearly labeled, offering very good grip for the Click board™, preventing it to flip over or to be placed incorrectly.

The mikroBUS™ socket supports the following communication interfaces: SPI, UART, and I2C. There are also single pins reserved for PWM, Interrupt, Analog input, Reset, and SPI Chip Select. The mikroBUS™ socket also contains pins with the two power rails [3.3V and 5V], along with the GND pins.

Each SiBRAIN card has different pins routed to the mikroBUS™ sockets, depending on the particular MCU. Therefore, each mikroBUS™ socket is labeled on the development board with its ordinal number, by which the connector is referenced to in the MIKROE development environment, software applications, tutorials, etc.

Also, each SiBRAIN card has the pins routed to the corresponding mikroBUS™ clearly labeled on the SiBRAIN card itself, as described in the SiBRAIN section. This allows users to instantly know which MCU pin is routed to a pin on the specific mikroBUS™ socket.

Figure 11: Main board with mikroBUS™ socket close up view

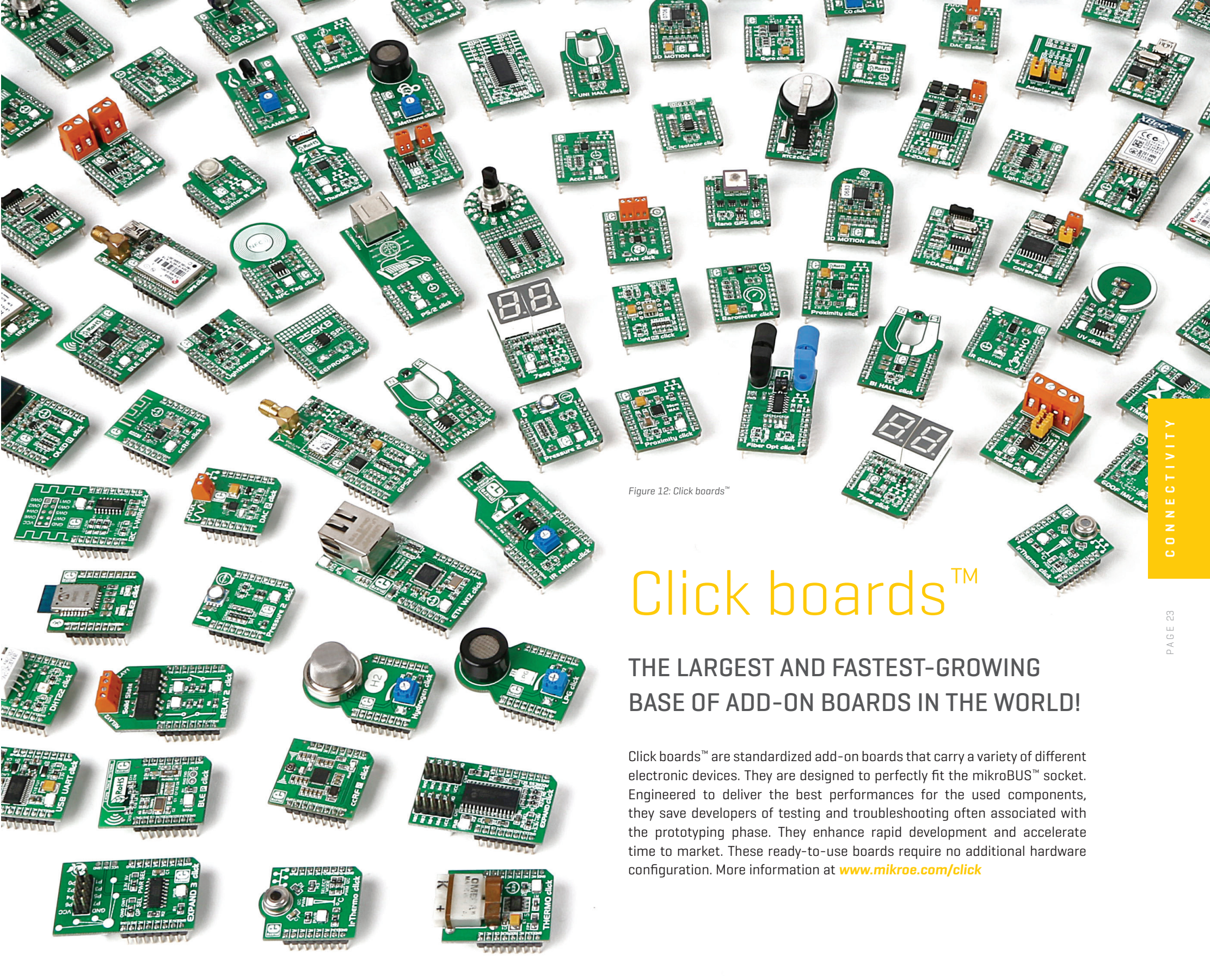


Figure 12: Click boards™

Click boards™

THE LARGEST AND FASTEST-GROWING
BASE OF ADD-ON BOARDS IN THE WORLD!

Click boards™ are standardized add-on boards that carry a variety of different electronic devices. They are designed to perfectly fit the mikroBUS™ socket. Engineered to deliver the best performances for the used components, they save developers of testing and troubleshooting often associated with the prototyping phase. They enhance rapid development and accelerate time to market. These ready-to-use boards require no additional hardware configuration. More information at www.mikroe.com/click

Communication

Communication connectors allow the development board to be connected with many different devices that use high-layer communication protocols such as Ethernet, USB, etc. Also, there is a USB-UART converter, offering simplified communication with the personal computer over the emulated serial interface. Each of these connectors will be described in more details, in the following sections of the manual.

USB-UART

UART (Universal Asynchronous Receiver/Transmitter) interface is one of the most common interfaces for data exchange between the MCU and other external devices. EasyAVR PRO v8 development board offers the UART connectivity over the USB-C connector **(1)** by utilizing the FT230XQ, a popular USB-UART bridge IC, produced by FTDI Chip. This IC contains the complete USB stack necessary for the interface bridging between the UART peripheral of the MCU and the USB interface of the PC. FT230XQ drivers are available for download from the EasyAVR PRO v8 product web page, as well as from the official FTDI drivers download web page.

To enable data exchange via the USB-UART connector, the MCU UART peripheral lines must be connected to the corresponding pins of the FT230XQ IC. This can be done using the four-pole DIP switch, labeled as USB/UART [SW2 on the schematic]. Only two switch positions are used for the UART setup:

- SW2.3** **ON (up):** connects the UART TX pin from the MCU to the FT230XQ IC;
OFF (down): disconnects the UART TX pin from the FT230XQ IC
- SW2.4** **ON (up):** connects the UART RX pin from the MCU to the FT230XQ IC;
OFF (down): disconnects the UART RX pin from the FT230XQ IC

USB

USB (Universal Serial Bus) is a very popular industry standard that defines cables, connectors, and protocols used for communication and power supply between devices. USB-C (USB Type-C connector) is the latest version of the USB connector, developed by the USB Implementation Forum (USB-IF). Due to its many advantages including symmetrical pinout, higher current capacity, and faster supported data rates, it is probably going to replace all the previous USB connector types. USB-C connector supports both USB HOST and USB DEVICE modes. This enables MCUs equipped with the USB **(2)** peripheral to act either as a USB HOST or as a USB DEVICE, allowing development of a range of various USB based applications.

The USB mode selection is done using an a specialized controller IC solution. This IC provides Configuration Channel [CC] control logic detection and indication functions. The HOST/DEVICE detection pin (USB ID), as well as the HOST/DEVICE configuration pin (USB PSW) of the MCU, can be connected with the logic control circuit by using the DIP switch [SW1], located in the BOARD SETUP section:

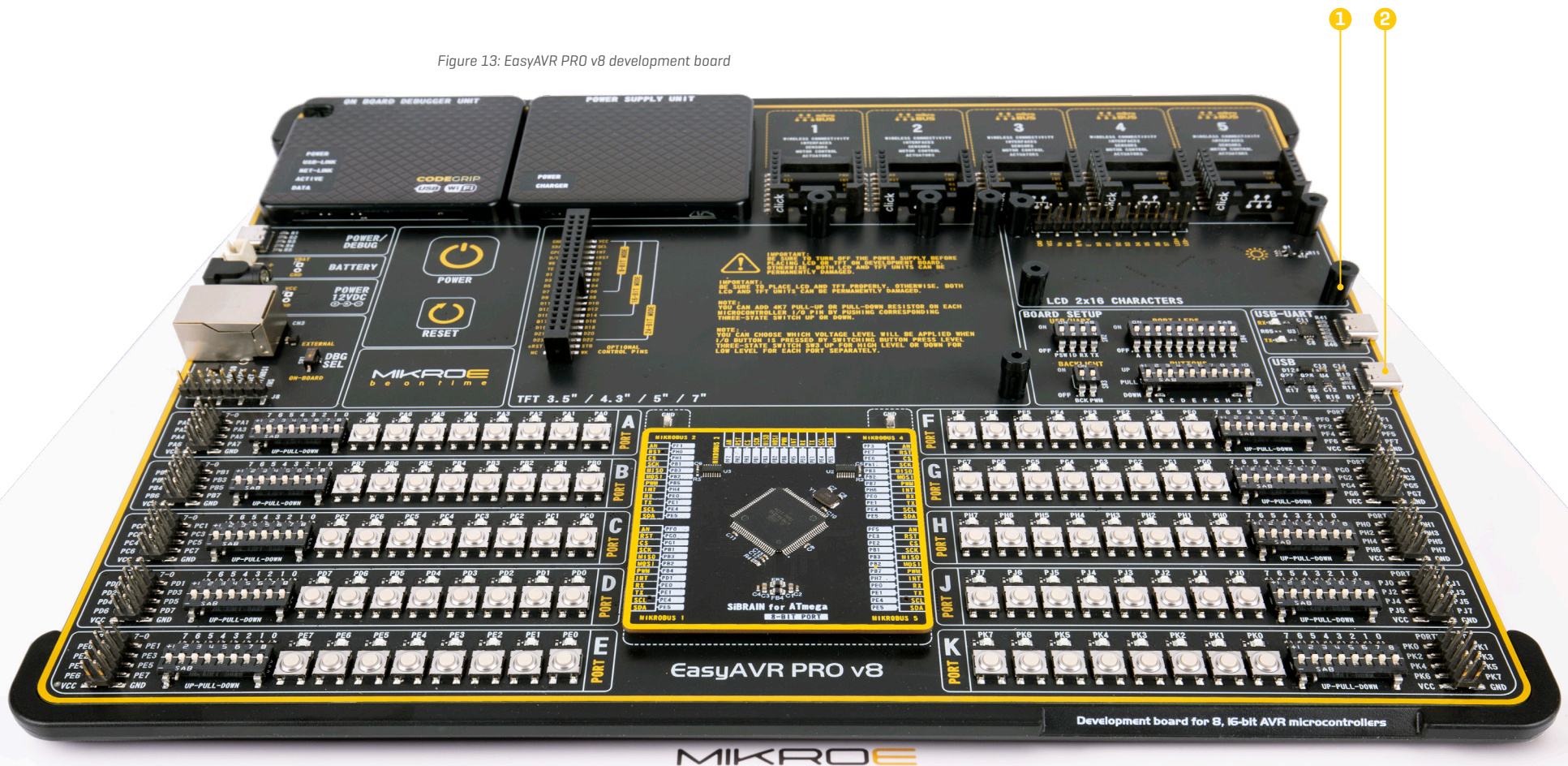
- SW2.1** **ON (up):** connects the HOST/DEVICE configuration pin of the MCU with the PTN5150 logic control circuit;
OFF (down): disconnects the HOST/DEVICE configuration pin from the PTN5150 logic control circuit
- SW2.2** **ON (up):** connects the HOST/DEVICE detection pin of the MCU with the logic control circuit;
OFF (down): disconnects the HOST/DEVICE detection pin from the logic control circuit

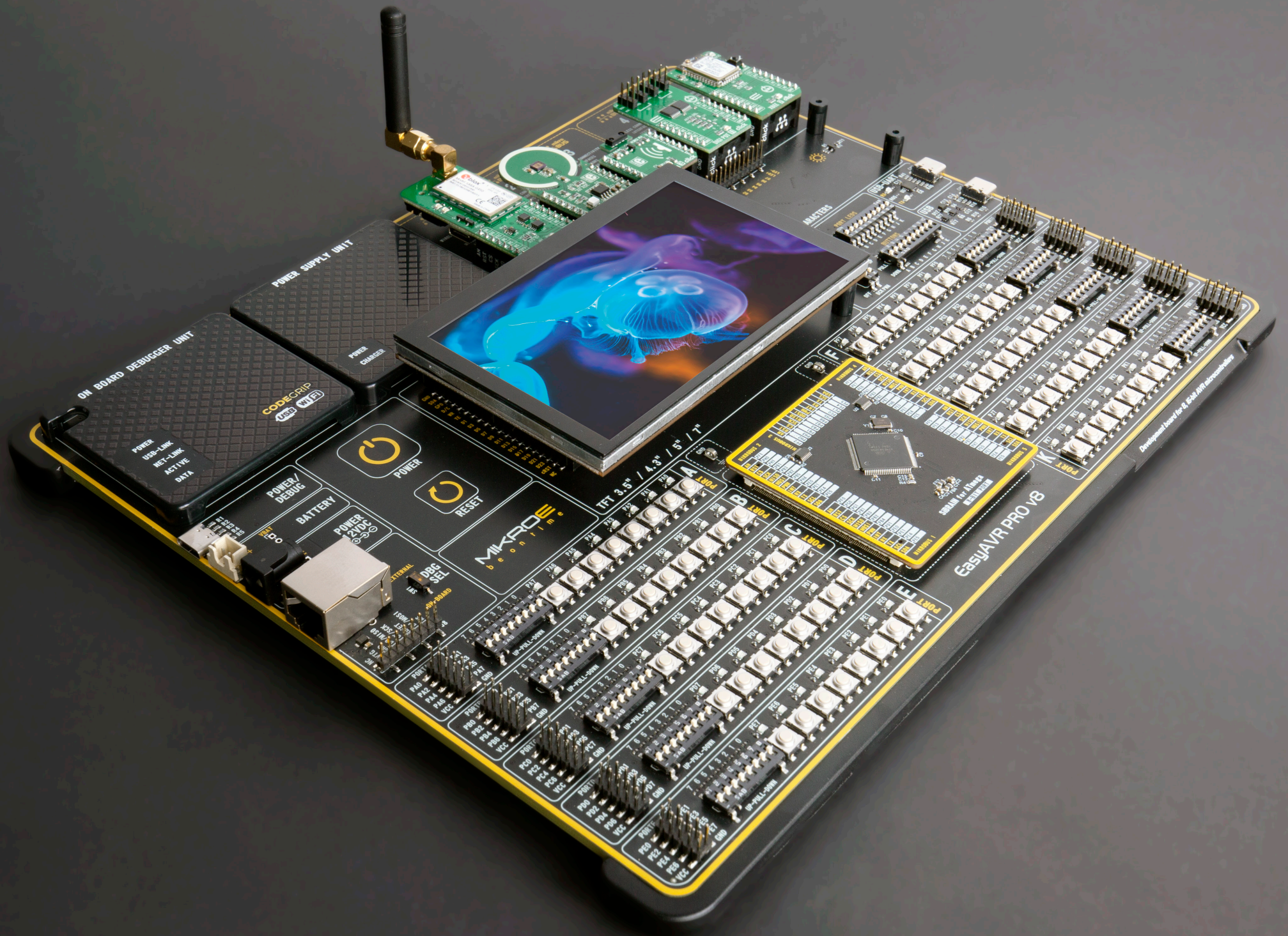
To set up EasyAVR PRO v8 development board as the USB HOST, the PSW pin should be set to a LOW logic level [0] by the MCU. If set to a HIGH logic level [1] the development board acts as a DEVICE. In HOST mode, EasyAVR PRO v8 development board provides the power over the USB-C connector for the attached device. The USB ID pin is used to detect the type of the device attached to the USB port, according to USB OTG specifications: the USB ID pin connected to GND indicates a HOST, while the USB ID pin set to a high impedance state [HI-Z] indicates that the connected peripheral is a DEVICE.

Additional GNDs

EasyAVR PRO v8 development board contains two exposed GND pins just above the SiBRAIN card, which can be used to connect measurement or testing equipment. These additional GND pins allow secure connection with the instrumentation probes, avoiding loose cables or unreliable contacts that might compromise the accuracy of the readings.

Figure 13: EasyAVR PRO v8 development board





The 8th generation of hardware perfection

ON BOARD DEBUGGER UNIT

POWER
USB-LINK
NET-LINK
ACTIVE
DATA

CODEGRIP
USB WiFi

POWER SUPPLY UNIT

POWER
CHARGER

1
WIRELESS CONNECTIVITY
INTERFACES
SENSORS
MOTOR CONTROL
ACTUATORS
INPUT DEVICES
DISPLAYS

2
WIRELESS CONNECTIVITY
INTERFACES
SENSORS
MOTOR CONTROL
ACTUATORS
INPUT DEVICES
DISPLAYS

3
WIRELESS CONNECTIVITY
INTERFACES
SENSORS
MOTOR CONTROL
ACTUATORS
INPUT DEVICES
DISPLAYS

4
WIRELESS CONNECTIVITY
INTERFACES
SENSORS
MOTOR CONTROL
ACTUATORS
INPUT DEVICES
DISPLAYS

5
WIRELESS CONNECTIVITY
INTERFACES
SENSORS
MOTOR CONTROL
ACTUATORS
INPUT DEVICES
DISPLAYS

POWER/DEBUG

BATTERY

POWER 12VDC

EXTERNAL

DBG SEL

ON-BOARD

POWER

RESET

MIKROE
be on time

OPTIONAL CONTROL PINS

8-BIT MODE
16-BIT MODE
24-BIT MODE

IMPORTANT:
BE SURE TO TURN OFF THE POWER SUPPLY BEFORE PLACING LCD OR TFT ON DEVELOPMENT BOARD. OTHERWISE, BOTH LCD AND TFT UNITS CAN BE PERMANENTLY DAMAGED.

NOTE:
YOU CAN ADD 4K7 PULL-UP OR PULL-DOWN RESISTOR ON EACH MICROCONTROLLER I/O PIN BY PUSHING CORRESPONDING THREE-STATE SWITCH UP OR DOWN.

NOTE:
YOU CAN CHOOSE WHICH VOLTAGE LEVEL WILL BE APPLIED WHEN I/O BUTTON IS PRESSED BY SWITCHING BUTTON PRESS LEVEL THREE-STATE SWITCH SW3 UP FOR HIGH LEVEL OR DOWN FOR LOW LEVEL FOR EACH PORT SEPARATELY.

LCD 2x16 CHARACTERS

BOARD SETUP

USB-UART

PORT LEDS

BACKLIGHT

BUTTONS

USB

PORT A

PORT B

PORT C

PORT D

PORT E

MIKROBUS 2

MIKROBUS 3

MIKROBUS 4

MIKROBUS 5

MIKROBUS 6

MIKROBUS 7

MIKROBUS 8

MIKROBUS 9

MIKROBUS 10

MIKROBUS 11

MIKROBUS 12

MIKROBUS 13

MIKROBUS 14

MIKROBUS 15

MIKROBUS 16

MIKROBUS 17

MIKROBUS 18

MIKROBUS 19

MIKROBUS 20

MIKROBUS 21

MIKROBUS 22

MIKROBUS 23

MIKROBUS 24

MIKROBUS 25

MIKROBUS 26

MIKROBUS 27

MIKROBUS 28

MIKROBUS 29

MIKROBUS 30

MIKROBUS 31

MIKROBUS 32

MIKROBUS 33

MIKROBUS 34

MIKROBUS 35

MIKROBUS 36

MIKROBUS 37

MIKROBUS 38

MIKROBUS 39

MIKROBUS 40

MIKROBUS 41

MIKROBUS 42

MIKROBUS 43

MIKROBUS 44

MIKROBUS 45

MIKROBUS 46

MIKROBUS 47

MIKROBUS 48

MIKROBUS 49

MIKROBUS 50

MIKROBUS 51

MIKROBUS 52

MIKROBUS 53

MIKROBUS 54

MIKROBUS 55

MIKROBUS 56

MIKROBUS 57

MIKROBUS 58

MIKROBUS 59

MIKROBUS 60

MIKROBUS 61

MIKROBUS 62

MIKROBUS 63

MIKROBUS 64

MIKROBUS 65

MIKROBUS 66

MIKROBUS 67

MIKROBUS 68

MIKROBUS 69

MIKROBUS 70

MIKROBUS 71

MIKROBUS 72

MIKROBUS 73

MIKROBUS 74

MIKROBUS 75

MIKROBUS 76

MIKROBUS 77

MIKROBUS 78

MIKROBUS 79

MIKROBUS 80

MIKROBUS 81

MIKROBUS 82

MIKROBUS 83

MIKROBUS 84

MIKROBUS 85

MIKROBUS 86

MIKROBUS 87

MIKROBUS 88

MIKROBUS 89

MIKROBUS 90

MIKROBUS 91

MIKROBUS 92

MIKROBUS 93

MIKROBUS 94

MIKROBUS 95

MIKROBUS 96

MIKROBUS 97

MIKROBUS 98

MIKROBUS 99

MIKROBUS 100

MIKROBUS 101

MIKROBUS 102

MIKROBUS 103

MIKROBUS 104

MIKROBUS 105

MIKROBUS 106

MIKROBUS 107

MIKROBUS 108

MIKROBUS 109

MIKROBUS 110

MIKROBUS 111

MIKROBUS 112

MIKROBUS 113

MIKROBUS 114

MIKROBUS 115

MIKROBUS 116

MIKROBUS 117

MIKROBUS 118

MIKROBUS 119

MIKROBUS 120

MIKROBUS 121

MIKROBUS 122

MIKROBUS 123

MIKROBUS 124

MIKROBUS 125

MIKROBUS 126

MIKROBUS 127

MIKROBUS 128

MIKROBUS 129

MIKROBUS 130

MIKROBUS 131

MIKROBUS 132

MIKROBUS 133

MIKROBUS 134

MIKROBUS 135

MIKROBUS 136

MIKROBUS 137

MIKROBUS 138

MIKROBUS 139

MIKROBUS 140

MIKROBUS 141

MIKROBUS 142

MIKROBUS 143

MIKROBUS 144

MIKROBUS 145

MIKROBUS 146

MIKROBUS 147

MIKROBUS 148

MIKROBUS 149

MIKROBUS 150

MIKROBUS 151

MIKROBUS 152

MIKROBUS 153

MIKROBUS 154

MIKROBUS 155

MIKROBUS 156

MIKROBUS 157

MIKROBUS 158

MIKROBUS 159

MIKROBUS 160

MIKROBUS 161

MIKROBUS 162

MIKROBUS 163

MIKROBUS 164

MIKROBUS 165

MIKROBUS 166

MIKROBUS 167

MIKROBUS 168

MIKROBUS 169

MIKROBUS 170

MIKROBUS 171

MIKROBUS 172

MIKROBUS 173

MIKROBUS 174

MIKROBUS 175

MIKROBUS 176

MIKROBUS 177

MIKROBUS 178

MIKROBUS 179

MIKROBUS 180

MIKROBUS 181

MIKROBUS 182

MIKROBUS 183

MIKROBUS 184

MIKROBUS 185

MIKROBUS 186

MIKROBUS 187

MIKROBUS 188

MIKROBUS 189

MIKROBUS 190

MIKROBUS 191

MIKROBUS 192

MIKROBUS 193

MIKROBUS 194

MIKROBUS 195

MIKROBUS 196

MIKROBUS 197

MIKROBUS 198

MIKROBUS 199

MIKROBUS 200

MIKROBUS 201

MIKROBUS 202

MIKROBUS 203

MIKROBUS 204

MIKROBUS 205

MIKROBUS 206

MIKROBUS 207

MIKROBUS 208

MIKROBUS 209

MIKROBUS 210

MIKROBUS 211

MIKROBUS 212

MIKROBUS 213

MIKROBUS 214

MIKROBUS 215

MIKROBUS 216

MIKROBUS 217

MIKROBUS 218

MIKROBUS 219

MIKROBUS 220

MIKROBUS 221

MIKROBUS 222

MIKROBUS 223

MIKROBUS 224

MIKROBUS 225

MIKROBUS 226

MIKROBUS 227

MIKROBUS 228

MIKROBUS 229

MIKROBUS 230

MIKROBUS 231

MIKROBUS 232

MIKROBUS 233

MIKROBUS 234

MIKROBUS 235

MIKROBUS 236

MIKROBUS 237

MIKROBUS 238

MIKROBUS 239

MIKROBUS 240

MIKROBUS 241

MIKROBUS 242

MIKROBUS 243

MIKROBUS 244

MIKROBUS 245

MIKROBUS 246

MIKROBUS 247

MIKROBUS 248

MIKROBUS 249

MIKROBUS 250

MIKROBUS 251

MIKROBUS 252

MIKROBUS 253

MIKROBUS 254

MIKROBUS 255

MIKROBUS 256

MIKROBUS 257

MIKROBUS 258

MIKROBUS 259

MIKROBUS 260

MIKROBUS 261

MIKROBUS 262

MIKROBUS 263

MIKROBUS 264

MIKROBUS 265

MIKROBUS 266

MIKROBUS 267

MIKROBUS 268

MIKROBUS 269

MIKROBUS 270

MIKROBUS 271

MIKROBUS 272

MIKROBUS 273

MIKROBUS 274

MIKROBUS 275

MIKROBUS 276

MIKROBUS 277

MIKROBUS 278

MIKROBUS 279

MIKROBUS 280

MIKROBUS 281

MIKROBUS 282

MIKROBUS 283

MIKROBUS 284

MIKROBUS 285

MIKROBUS 286

MIKROBUS 287

MIKROBUS 288

MIKROBUS 289

MIKROBUS 290

MIKROBUS 291

MIKROBUS 292

MIKROBUS 293

MIKROBUS 294

MIKROBUS 295

MIKROBUS 296

MIKROBUS 297

MIKROBUS 298

MIKROBUS 299

MIKROBUS 300

MIKROBUS 301

MIKROBUS 302

MIKROBUS 303

MIKROBUS 304

MIKROBUS 305

MIKROBUS 306

MIKROBUS 307

MIKROBUS 308

MIKROBUS 309

MIKROBUS 310

MIKROBUS 311

MIKROBUS 312

MIKROBUS 313

MIKROBUS 314

MIKROBUS 315

MIKROBUS 316

MIKROBUS 317

MIKROBUS 318

MIKROBUS 319

MIKROBUS 320

MIKROBUS 321

MIKROBUS 322

MIKROBUS 323

MIKROBUS 324

MIKROBUS 325

MIKROBUS 326

MIKROBUS 327

MIKROBUS 328

MIKROBUS 329

MIKROBUS 330

MIKROBUS 331

MIKROBUS 332

MIKROBUS 333

MIKROBUS 334

MIKROBUS 335

MIKROBUS 336

MIKROBUS 337

MIKROBUS 338

MIKROBUS 339

MIKROBUS 340

MIKROBUS 341

MIKROBUS 342

MIKROBUS 343

MIKROBUS 344

MIKROBUS 345

MIKROBUS 346

MIKROBUS 347

MIKROBUS 348

MIKROBUS 349

MIKROBUS 350

MIKROBUS 351

MIKROBUS 352

MIKROBUS 353

MIKROBUS 354

MIKROBUS 355

MIKROBUS 356

MIKROBUS 357

MIKROBUS 358

MIKROBUS 359

MIKROBUS 360

MIKROBUS 361

MIKROBUS 362

MIKROBUS 363

MIKROBUS 364

MIKROBUS 365

MIKROBUS 366

MIKROBUS 367

MIKROBUS 368

MIKROBUS 369

MIKROBUS 370

MIKROBUS 371

MIKROBUS 372

MIKROBUS 373

MIKROBUS 374

MIKROBUS 375

MIKROBUS 376

MIKROBUS 377

MIKROBUS 378

MIKROBUS 379

MIKROBUS 380

MIKROBUS 381

MIKROBUS 382

MIKROBUS 383

MIKROBUS 384

MIKROBUS 385

MIKROBUS 386

MIKROBUS 387

MIKROBUS 388

MIKROBUS 389

MIKROBUS 390

MIKROBUS 391

MIKROBUS 392

MIKROBUS 393

MIKROBUS 394

MIKROBUS 395

MIKROBUS 396

MIKROBUS 397

MIKROBUS 398

MIKROBUS 399

MIKROBUS 400

MIKROBUS 401

MIKROBUS 402

MIKROBUS 403

MIKROBUS 404

MIKROBUS 405

MIKROBUS 406

MIKROBUS 407

MIKROBUS 408

MIKROBUS 409

MIKROBUS 410

MIKROBUS 411

MIKROBUS 412

MIKROBUS 413

MIKROBUS 414

MIKROBUS 415

MIKROBUS 416

MIKROBUS 417

MIKROBUS 418

MIKROBUS 419

MIKROBUS 420

MIKROBUS 421

MIKROBUS 422

MIKROBUS 423

MIKROBUS 424

MIKROBUS 425

MIKROBUS 426

MIKROBUS 427

MIKROBUS 428

MIKROBUS 429

MIKROBUS 430

MIKROBUS 431

MIKROBUS 432

MIKROBUS 433

MIKROBUS 434

MIKROBUS 435

MIKROBUS 436

MIKROBUS 437

MIKROBUS 438

MIKROBUS 439

MIKROBUS 440

MIKROBUS 441

MIKROBUS 442

MIKROBUS 443

MIKROBUS 444

MIKROBUS 445

MIKROBUS 446

MIKROBUS 447

MIKROBUS 448

MIKROBUS 449

MIKROBUS 450

MIKROBUS 451

MIKROBUS 452

MIKROBUS 453

MIKROBUS 454

MIKROBUS 455

MIKROBUS 456

MIKROBUS 457

MIKROBUS 458

MIKROBUS 459

MIKROBUS 460

MIKROBUS 461

MIKROBUS 462

MIKROBUS 463

MIKROBUS 464

MIKROBUS 465

MIKROBUS 466

MIKROBUS 467

MIKROBUS 468

MIKROBUS 469

MIKROBUS 470

MIKROBUS 471

MIKROBUS 472

MIKROBUS 473

MIKROBUS 474

MIKROBUS 475

MIKROBUS 476

MIKROBUS 477

MIKROBUS 478

MIKROBUS 479

MIKROBUS 480

MIKROBUS 481

MIKROBUS 482

MIKROBUS 483

MIKROBUS 484

MIKROBUS 485

MIKROBUS 486

MIKROBUS 487

MIKROBUS 488

MIKROBUS 489

MIKROBUS 490

MIKROBUS 491

MIKROBUS 492

MIKROBUS 493

MIKROBUS 494

MIKROBUS 495

MIKROBUS 496

MIKROBUS 497

MIKROBUS 498

MIKROBUS 499

MIKROBUS 500

MIKROBUS 501

MIKROBUS 502

MIKROBUS 503

MIKROBUS 504

MIKROBUS 505

MIKROBUS 506

MIKROBUS 507

MIKROBUS 508

MIKROBUS 509

MIKROBUS 510

MIKROBUS 511

MIKROBUS 512

MIKROBUS 513

MIKROBUS 514

MIKROBUS 515

MIKROBUS 516

MIKROBUS 517

MIKROBUS 518

MIKROBUS 519

MIKROBUS 520

MIKROBUS 521

MIKROBUS 522

MIKROBUS 523

MIKROBUS 524

MIKROBUS 525

MIKROBUS 526

MIKROBUS 527

MIKROBUS 528

MIKROBUS 529

MIKROBUS 530

MIKROBUS 531

MIKROBUS 532

MIKROBUS 533

MIKROBUS 534

MIKROBUS 535

MIKROBUS 536

MIKROBUS 537

MIKROBUS 538

MIKROBUS 539

MIKROBUS 540

MIKROBUS 541

MIKROBUS 542

MIKROBUS 543

MIKROBUS 544

MIKROBUS 545

MIKROBUS 546

MIKROBUS 547

MIKROBUS 548

MIKROBUS 549

MIKROBUS 550

MIKROBUS 551

MIKROBUS 552

MIKROBUS 553

MIKROBUS 554

MIKROBUS 555

MIKROBUS 556

MIKROBUS 557

MIKROBUS 558

MIKROBUS 559

MIKROBUS 560

MIKROBUS 561

MIKROBUS 562

MIKROBUS 563

MIKROBUS 564

MIKROBUS 565

MIKROBUS 566

MIKROBUS 567

MIKROBUS 568

MIKROBUS 569

MIKROBUS 570

MIKROBUS 571

MIKROBUS 572

MIKROBUS 573

MIKROBUS 574

MIKROBUS 575

MIKROBUS 576

MIKROBUS 577

MIKROBUS 578

MIKROBUS 579

MIKROBUS 580

MIKROBUS 581

MIKROBUS 582

MIKROBUS 583

MIKROBUS 584

MIKROBUS 585

MIKROBUS 586

MIKROBUS 587

MIKROBUS 588

MIKROBUS 589

MIKROBUS 590

MIKROBUS 591

MIKROBUS 592

MIKROBUS 593

MIKROBUS 594

MIKROBUS 595

MIKROBUS 596

MIKROBUS 597

MIKROBUS 598

MIKROBUS 599

MIKROBUS 600

MIKROBUS 601

MIKROBUS 602

MIKROBUS 603

MIKROBUS 604

MIKROBUS 605

MIKROBUS 606

MIKROBUS 607

MIKROBUS 608

MIKROBUS 609

MIKROBUS 610

MIKROBUS 611

MIKROBUS 612

MIKROBUS 613

MIKROBUS 614

MIKROBUS 615

MIKROBUS 616

MIKROBUS 617

MIKROBUS 618

MIKROBUS 619

MIKROBUS 620

MIKROBUS 621

MIKROBUS 622

MIKROBUS 623

MIKROBUS 624

MIKROBUS 625

MIKROBUS 626

MIKROBUS 627

MIKROBUS 628

MIKROBUS 629

MIKROBUS 630

MIKROBUS 631

MIKROBUS 632

MIKROBUS 633

MIKROBUS 634

MIKROBUS 635

MIKROBUS 636

MIKROBUS 637

MIKROBUS 638

MIKROBUS 639

MIKROBUS 640

MIKROBUS 641

MIKROBUS 642

MIKROBUS 643

MIKROBUS 644

MIKROBUS 645

MIKROBUS 646

MIKROBUS 647

MIKROBUS 648

MIKROBUS 649

MIKROBUS 650

MIKROBUS 651

MIKROBUS 652

MIKROBUS 653

MIKROBUS 654

MIKROBUS 655

MIKROBUS 656

MIKROBUS 657

MIKROBUS 658

MIKROBUS 659

MIKROBUS 660

MIKROBUS 661

MIKROBUS 662

MIKROBUS 663

MIKROBUS 664

MIKROBUS 665

MIKROBUS 666

MIKROBUS 667

MIKROBUS 668

MIKROBUS 669


MIKROBUS 670

MIKROBUS 671

MIKROBUS 672

MIKROBUS 673

MIKROBUS 67



What makes you want to be an embedded developer? Is it the recognition of your skills, invention, or the development process? Whatever the reason is, we want to let you know that we are here for you every step of the way.

You can enjoy the process focused, yet relaxed – everything else is taken care of.

Enjoy premium.



What's Next?

You have now completed the journey through each and every feature of the EasyAVR PRO v8 development board. You have become familiar with its modules, organization, and the programmer/debugger. Now you are ready to start using your new board. We suggest following steps which are highly recommended to begin with.

1. COMPILERS

Easy programming, clean interface, powerful debugging, excellent support - our compilers come in three different flavors: mikroC PRO for AVR, mikroBASIC PRO for AVR and mikroPASCAL PRO for AVR, offering a complete rapid embedded development solution for these 3 major programming languages.

www.mikroe.com/compilers/compilers-avr

Fast, professional, multiplatform, and multi-architectural NECTO Studio is already in the air. For more information, please visit: www.mikroe.com/necto

3. COMMUNITY

We invite you to join thousands of users of MIKROE development tools. Find useful projects and tutorials and get help from a large user community. Get libraries for your favorite click boards straight from the compilers IDE using Libstock Manager. If you want to download free projects and libraries or share your code, please visit the Libstock website. With user profiles, you can get to know other programmers, and subscribe to receive notifications on their code. <https://libstock.mikroe.com>

2. PROJECTS

Once you have chosen your compiler, and since you already got the board, you are ready to start writing your first projects. We have equipped our compilers with dozens of examples that demonstrate the use of every feature of the EasyAVR PRO v8 development board, delivering an excellent starting point for future custom projects. Just load the example, read well-commented code, and see how it works on hardware.

4. SUPPORT

MIKROE offers free Tech Support to the end of its life span, so if anything goes wrong, we are ready and willing to help. We know how important it is to be able to rely on someone in the moments when we are stuck with our projects for any reason, or facing a deadline. This is why our Support Department, as one of the pillars upon which our company is based, now also offers the Premium Technical Support to business users, ensuring even shorter time-frame for solutions. The WiFi debugger feature offers additional level of technical support, allowing our team to provide help by directly connecting to the end users hardware.

www.helpdesk.mikroe.com

DISCLAIMER

All the products owned by MikroElektronika are protected by copyright law and international copyright treaty. Therefore, this manual is to be treated as any other copyright material. No part of this manual, including product and software described herein, must be reproduced, stored in a retrieval board, translated or transmitted in any form or by any means, without the prior written permission of MikroElektronika. The manual PDF edition can be printed for private or local use, but not for distribution. Any modification of this manual is prohibited.

MikroElektronika provides this manual 'as is' without warranty of any kind, either expressed or implied, including, but not limited to, the implied warranties or conditions of merchantability or fitness for a particular purpose.

MikroElektronika shall assume no responsibility or liability for any errors, omissions and inaccuracies that may appear in this manual. In no event shall MikroElektronika, its directors, officers, employees or distributors be liable for any indirect, specific, incidental or consequential damages [including damages for loss of business profits and business information, business interruption or any other pecuniary loss] arising out of the use of this manual or product, even if MikroElektronika has been advised of the possibility of such damages. MikroElektronika reserves the right to change information contained in this manual at any time without prior notice, if necessary.

HIGH RISK ACTIVITIES

The products of MikroElektronika are not fault – tolerant nor designed, manufactured or intended for use or resale as on – line control equipment in hazardous environments requiring fail – safe performance, such as in the operation of nuclear facilities, aircraft navigation or communication boards, air traffic control, direct life support machines or weapons systems in which the failure of Software could lead directly to death, personal injury or severe physical or environmental damage ['High Risk Activities']. MikroElektronika and its suppliers specifically disclaim any expressed or implied warranty of fitness for High Risk Activities.

TRADEMARKS

The MikroElektronika name and logo, the MikroElektronika logo, mikroC, mikroBasic, mikroPascal, mikroProg, mikromedia, Fusion, Click boards™ and mikroBUS™ are trademarks of MikroElektronika. All other trademarks mentioned herein are property of their respective companies.

All other product and corporate names appearing in this manual may or may not be registered trademarks or copyrights of their respective companies, and are only used for identification or explanation and to the owners' benefit, with no intent to infringe.

Copyright © MikroElektronika, 2022. All Rights Reserved.



If you want to learn more about our products, please visit our website at www.mikroe.com

If you are experiencing some problems with any of our products or just need additional information, please place your ticket at www.mikroe.com/support

If you have any questions, comments or business proposals,
do not hesitate to contact us at office@mikroe.com